

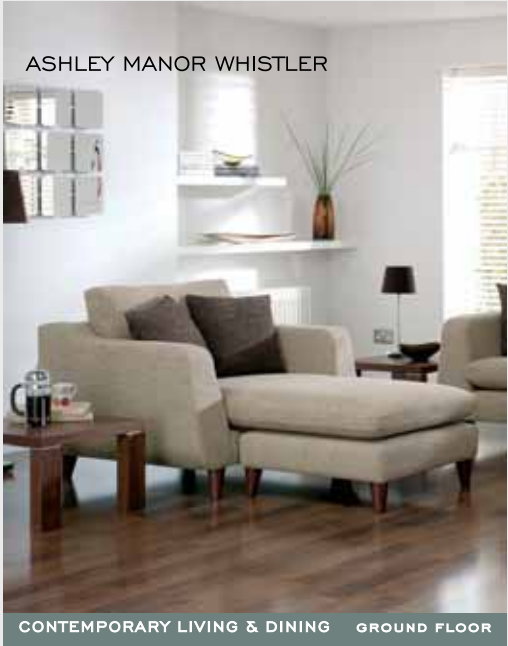
**FIRST** FOR FURNITURE



BYRON - TRADITIONAL LIVING & DINING FIRST FLOOR

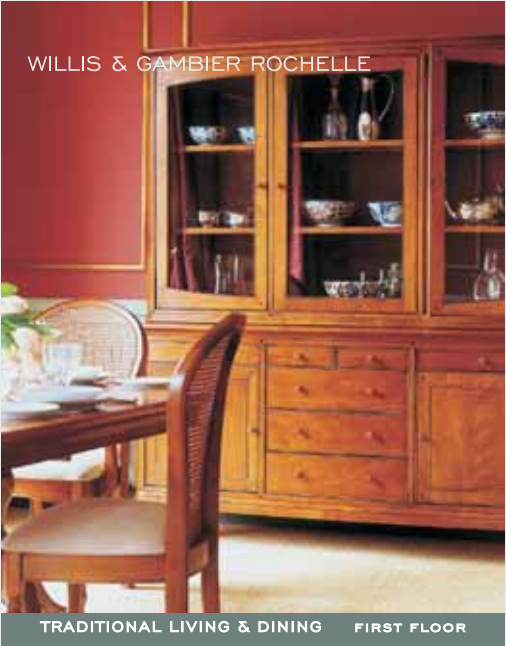
# RUSSELL & DORRELL

**FIRST** FOR VALUE      **FIRST** FOR CHOICE      **FIRST** FOR SERVICE



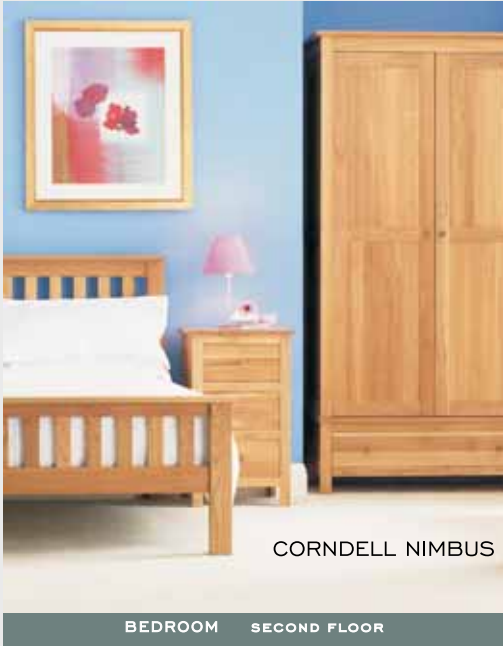
ASHLEY MANOR WHISTLER

CONTEMPORARY LIVING & DINING    GROUND FLOOR



WILLIS & GAMBIER ROCHELLE

TRADITIONAL LIVING & DINING    FIRST FLOOR



CORND ELL NIMBUS

BEDROOM    SECOND FLOOR



BEDS    SECOND FLOOR

## 3 EXTENSIVE FLOORS



**WE ARE HERE**

**OPEN 7 DAYS A WEEK**  
MON TO FRI 9AM - 5PM    SATURDAYS 9AM - 6PM  
SUNDAYS 11AM - 4PM

**RUSSELL & DORRELL**  
FURNITURE STORE

COUNTY MILLS ■ RIVERSIDE ■ WORCESTER  
TELEPHONE 01905 730910    [www.russellanddorrell.co.uk](http://www.russellanddorrell.co.uk)

# WORCESTER

## Christmas Magazine

ISSUE 5

2005



### BEAUTIFUL LIVING

Inspirational style for you and your home

### WHO'S COMING TO OUR PARTY?

Find out who this year's VIP guest at the CrownGate Christmas lights switch on is

### LATE NIGHT SHOPPING

Make Thursday's your special shopping day



# Christmas Beatties



"I love the choice of top name fragrances and cosmetics and their people are just brilliant"



"Their Crowngate store has great brands such as Levi, French Connection and Mexx"



"Great gift ideas and advice to treat all my family and friends"

## "I love Beatties Gift Tokens"

Available in denominations of £1, £5, £10, £20 and £50



## Beatties

DEPARTMENT STORE

SHOP WITH CONFIDENCE

WORCESTER - 01905 723456

www.beatties.co.uk

# Christmas Magazine 2005

## Contents

### FEATURES

**4 Reindeer Court** Discover a treasure trove of inspirational gifts for you and your home

**7 Stylish Living** A selection of products from Worcester's independent retailers gives you a taste of what the city has to offer

**9 A Christmas Message** From Peter Hayes, Minister at Worcester Baptist Church

**10 Simply Beautiful** Take time to indulge yourself this winter

**13 Chamberlains Worcester** Museum shopping as you've never known it before

**14 Friar Street Style** A unique shopping experience at Worcester's historic heart

**19 Season's Greetings** Take a look at how the design of cards has changed over the years and how some things have come full circle

**23 Christmas on your Doorstep** Find out who the VIP guest at CrownGate is this Christmas

### WHAT'S ON IN WORCESTER

**10 Worship at Christmas** Your guide to Church Services in Worcester City Centre this Christmas

**17 Panto Time** Jack and the Beanstalk at The Swan Theatre

**22 Magical Shopping on Thursdays** Make the most of late night shopping

**25, 27, 29 What's on in Worcester** Your guide to events over the festive period

### WHAT'S WHERE?

**30 City Centre Map** Routes into Worcester, parking, shopping and facilities in Worcester – all on a single handy page

## Dear Reader

With the time to get down to Christmas shopping drawing near once again, we've put together another wonderful selection of fashion and gift shopping to help you navigate the task ahead. And what's best about it: it's all right on your doorstep in Worcester. Why travel to a metropolitan centre or the stifling atmosphere of an out-of-town shopping centre when you can come and enjoy a pleasant day out in a historic riverside city like Worcester? It has all the household name stores you could need and lots of independent shops you won't find anywhere else.

Worcester's celebrations get under way on Thursday 17th November when a VIP guest will be coming to town and will continue every Thursday up to Christmas with a real party atmosphere in Worcester, including free mince pies and magical letterboxes (read all about it on pages 22 - 23).

As well as shopping, Worcester has an enticing range of places to eat out during the day or, once you've finished your shopping, why not stay on for a pre-theatre or concert meal. On pages 25-29 you will find a detailed list of events taking place in the city between now and Christmas – there's something for all the family. Try the ever-popular panto at The Swan – Jack and the Beanstalk, enjoy the music of guitarist John Williams at Huntingdon Hall, marvel at the workmanship of the Worcestershire Guild of Designer Craftsmen's in their winter show or sign up for one of the children's workshops at the City Art Gallery and Museum.

Worcester City Centre Forum sends its warm wishes for an enjoyable Christmas to everyone living in and visiting Worcester.

*Georgia Smith*

Georgia Smith  
City Centre Manager







# Reindeer Court

Make time to wander into one of Worcester's most historic courtyards to discover a treasure trove of inspirational gifts for you, your home and your friends and family.

It's always easy just to rush into town and go to the shops you always go to, but if you're looking for inspiration this Christmas, why not make a small detour and find yourself in a picturesque courtyard offering some of Worcester's most interesting shopping. Located just off The Shambles (opposite Marks & Spencer ladieswear) and with



entrances off Mealcheapen Street and New Street, Reindeer Court's cobbled streets and courtyard cafés, it's one of the most distinctive shopping environments in the City and offers a haven a calm away from the hustle and bustle of the high street.

## Party time

Wandering in from Mealcheapen Street, immediately on your left you'll see Clarity ladies fashion. This veritable emporium is filled with delectable outfits for the party season and with more than 25 years of buying expertise, owner Dianna Clark knows just what her customers are looking for. Yes

they want that touch of glamour, but they also want something that's really flattering and makes them feel like a million dollars. A huge range of silky jumpers and snug-fitting bodies complement the range of day and evening wear and you'll find great finishing touches from Clarity's range of accessories: jewellery, belts and scarves to set off any outfit. If your budget is a bit limited this year, why not try Clarity's new hire department where you'll discover a carefully selected range of fashion items to add some zest to your winter wardrobe.

A few doors further into the courtyard, View makes a very different fashion statement. Open, light and airy Martyn and Becky Rumsey's store which opened in the Court a few years ago, sells wonderful fashion items from names such as East, Nougat, Jackpot, Ted Baker and many other leading designers. From elegant and easy-to-wear soft knits to fun items such as the stripey jumper pictured, you'll also find a range of dresses with flattering, flowing lines and unusual touches that can be worn on all sorts of occasion.

Walk past Court Leather at number 21 and you smell it's genuine. Filled with a huge variety of stylish leather jackets, coats and trousers for both men and women, including the perennially popular flying jacket, this shop is full of atmosphere too. Set against old beams and brick walls Jenny also stocks a huge range of handbags in quality leathers by Tula, Radley and Hidesign which make ideal gifts for Christmas, or if you're looking for more of a stocking filler, the range of purses and wallets, belts, gloves and sheepskin products is hard to better. Well, perhaps the rugs aren't exactly stocking fillers, but they'd make a great gift anyway!

Fuel is now in its 5th year in Reindeer Court, and offers a wide range of popular female fashions with labels such as Miss Sixty, Firetrap, Freesoul, Replay including footwear and accessories.

Dare is well established in Reindeer Court and offers a great selection of alternative, street, boho and ethnic fashions for the funky female.



## Take a break

If all this shopping is getting a bit much, may be it's time for a break. Elgar's coffee shop and licensed restaurant offers a choice of light meals, tasty cakes and pastries and a whole range of teas and coffees. Take a seat in the amazing historic interior (it's worth a look upstairs if you haven't already seen it) or enjoy the continental feel as you sit and watch other shoppers pass the courtyard tables.

Recently opened, Epic' bar and brasserie brings a fresh dining experience to the city and the Court. Stylish and modern it's a great place to enjoy a glass of wine and some food, whether it's a light salad lunch or a full meal. Whatever you choose make sure you save a space for one of the mouth-watering desserts!



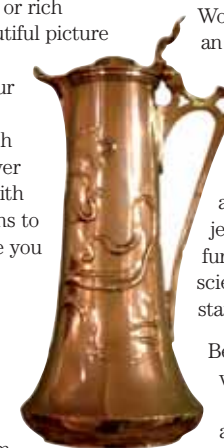
## A feast for the senses - ideas for beautiful living

Refreshed after your break, it's time to get down to some serious shopping. Making your home look special at Christmas can be both enjoyable and rewarding with the selection of shops to help you in the Court.

Serendipity Home, the newest shop in Reindeer Court, has an immense range of contemporary accessories for your home from candles, vases and pictures to throws and cushions in faux fur, tapestry or rich velvets. Feast your eyes on a beautiful picture or an elegant ornament and imagine how it could enhance your home as you see it set off against a carefully selected range of stylish furniture. Upstairs you will discover a magical Christmas shop filled with traditional and modern decorations to create just the festive atmosphere you want at home.

Opposite Serendipity you will see the Hatt Kitchens showroom. Locally made to stringent quality requirements, the shop showcases Hatt's current kitchen furniture ranges in attractive room settings. Sleek appliances by leading makers are also on offer - from hobs and cookers to dishwashers and fridges. Advice and a full kitchen planning service is available from knowledgeable staff.

Jessica Jones offers Worcester's most extensive selection of lighting at its premises in the Court. From traditional to ultra modern, there is a dazzling array of table lamps, wall lights and pendant fittings, lampshades and chandeliers, and outdoor lighting. And if all this seems just a bit too dazzling, professional advice is available at the Lighting Design Studio. Book a consultation, consider just what ambience you want in your home or office and let expert advisors show you how to translate your concept into reality.



Only a few doors away in Worcester Hi-Fi's spacious showroom you will find all the latest in TV, home cinema and audio technology. With experienced sales staff on hand to provide advice on which products are best suited to your needs and a demo room to check the sound reproduction before you buy, choosing new technology to complement the home interior you've created has never been easier.

Behind a small doorway and down a flight of stairs next to Epic' brasserie, you will find Worcester Antiques Centre located in an enormous basement show centre filled with antiques and collectables from 17th to 20th centuries. Specialising in Royal Worcester, English porcelains and pottery, silver and dining room accessories, the centre also stocks jewellery and period watches, furniture, glass and kitchenalia, scientific instruments, militaria, books, stamps and coins.

Beautiful Flowers, linking the Court with New Street is aptly named. Filled with stunning blooms from around the world, select a striking design or a hand-tied bouquet to complement your home interior. Beautiful Flowers can organise regular deliveries to your home or office or provide special creations for special events, such as weddings, parties or product launches.

## Add a touch of sparkle

Whether you want to create your own informal necklace, select a traditional solitaire or choose from contemporary pieces by leading designers, Reindeer Court is the place to shop.

Rock Lobster, set up in 1998 by Linda and Jamie Preston, specialises in the very best of contemporary UK and international design. Their attractive premises offers stunning pieces by British designers Jeremy Hoye,

Diana Porter and Stephen Webster as well as international names such as Thomas Sabo or Heinrich & Denzel.

Jeweller and goldsmith, Ian Quartermaine's newly refurbished shop brings you classic style with excellent service. Situated at the corner opposite Jessica Jones, this small shop is bursting with gold, diamonds and other precious stones.

Ice, just across the way, is close to the Shambles entrance. Here in these bright and modern premises, classic style meets contemporary innovation to provide jewellery of timeless elegance. If you are looking for inspiration for a gift this year, professional staff will be able to guide you through the choice of jewellery, watches and silverware until you find just the right thing.



Brimstone Beads, at the Mealcheapen Street end of the Court is overflowing with beads of every hue, shape and size for you to turn into dramatic necklaces or ear rings. With all the jewellery findings you need to complete your project and a choice of books to provide you with inspiration, Brimstone can also offer advice on making up your jewellery. In addition, a bespoke picture framing service is also available from the shop.







# DIANNA CLARK

## CLARITY

STOCKISTS OF  
FRANK USHER  
BERNSHAW  
JOSEPH RIBKOFF  
ANNE BALON  
MICHEL AMBERS  
LIBRA  
ARIA  
JOHN CHARLES

NOW NEW HIRE  
DEPARTMENT ON  
SELECTED ITEMS.

**CLARITY**  
Ladies Fashion

17 Reindeer Court,  
Mealcheapen Street,  
Worcester WR1 2DS  
Telephone 01905 23539  
[www.clarityfashion.co.uk](http://www.clarityfashion.co.uk)

**10% off Ladieswear when you present this advert**

# Stylish Living

Your home says a lot about you, so finding a style you feel comfortable with is important. A selection of products from Worcester's independent retailers gives you just a taste of what the city has to offer.



Clear modern lines, bright colours and a really modern feel are the stock-in-trade of The Blue Room (3) in St. Swithin's Street. With new lines and funky designs from young UK designers and a whole range of Cath Kidston bags for overnight, for shopping, for your toiletries and even for pegs. Oh yes, and gloves and aprons too!



Cornucopia (1), by the Cathedral roundabout, is a Sia stockist with thousands of delectable items to choose from. Whether you're looking for a photo frame or vase or want to restyle your living room there is inspiration here, as well as a whole range of Jellycat products.

Serendipity (4), right at the heart of Reindeer Court, is epitomised by the warmth of chocolate and spices: glorious faux furs in chocolate brown, leather and raffia chairs against warm brown wood, ornaments and vases in bright golds, paprikas and oranges and neutrals.

# Serendipity HOME

For advice and inspiration on decorating your home or buying the perfect gift.



Interiors | Furniture | Gifts

Reindeer Court Worcester 01905 731010

New Road Bromsgrove 01527 877277




Select contemporary classics by individual designers from the in-store ranges at Wish (2) near Vue cinema, or use their bespoke interior design service and expertise to source specialist items. Lavish silk cushions and quilts, porcelain and lacquer lamps and bowls and a whole range of cards for every occasion.

# rock lobster

DESIGN LED JEWELLERY

[rock-lobster.com](http://rock-lobster.com)

21 Reindeer Court Worcester WR1 2DS





# Worcester Furniture Exhibition Centre

## "Furnishers of Quality"

Over 1000 items  
in stock for  
immediate  
delivery

**Upholstery**  
**Dining**  
**Bedroom**  
**Beds**  
**Occasional**

Free delivery  
within 50 miles

Free disposal of  
old furniture



First class friendly service with expert  
advice from highly qualified staff.  
Showrooms on three floors.

6 - 9 Cornmarket, Worcester  
**Telephone 01905 23653**  
[www.worcester-furniture.co.uk](http://www.worcester-furniture.co.uk)  
Car Park in nearby St Martins Gate (multistorey car park)

Ercol  
Wade Upholstery  
Nathan Teak  
Tempur  
G Plan Upholstery  
Batheaston  
Cintique  
Bevan Funnell  
Daneway  
Jay-Be  
Jaycee  
Vale  
Zerostress  
McDonagh  
Old Charm  
Relyon  
Rest Assured  
Sherborne  
Tapley  
William Bartlett

# Visit the Christmas Shop on the 1st floor for all your gifts this Christmas

Come along to our special shopping evening on  
Wednesday 16th November 5.30-9pm.

**1200 points\*** when you spend £50.

72-74 High Street, Worcester  
Telephone: 01905 726868

\*exclusions apply



# A Christmas Message

from Peter Hayes,  
Minister of Worcester Baptist Church

## Dear Reader

**Do you enjoy quizzes?** Below are two definitions; can you think what words they are defining?

- 1 A wild and exciting undertaking (not necessarily lawful)
- 2 The coming or arrival, especially of something extremely important

The answers: 1 is adventure and 2 is Advent.

Which definition best fits this particular time of year? Is Christmas just a wild and exciting undertaking (not necessarily lawful) or is there more to it?

After all, shopping in the run up to Christmas can have something of an adventure about it, the search for the latest toy pleadingly requested by the children, the triumphant feeling as you locate the Cranberry sauce recommended by the TV food guide; yes those can have a touch of the wild and exciting!

And Christmas morning itself as the little ones wake at 4.00am to enquire whether it is time to get up yet - well that too can be a bit challenging!

But what about that other word – Advent, that coming of something extremely important? Is this an accurate way to describe this time of year? The Church has for almost all its history held a waiting vigil during the weeks before Christmas. In anticipation of the arrival of the Christ child Christians have lit candles in the darkness and learned to wait in hope.

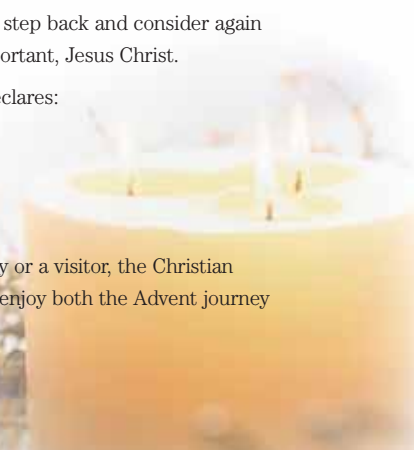
The year which is now closing has seen much darkness, from the terrible effects of natural disasters such as the Boxing Day tsunami in Asia and the more recent hurricanes in America but also as a result of famine in Africa and conflict in Iraq. Even the place of Christ's birth, Bethlehem, is today a place of division and suspicion. We can try to forget these things and throw ourselves into the Christmas adventure with all its excitement or we can just step back and consider again the arrival of someone extremely important, Jesus Christ.

One of the newer Christmas songs declares:

*And he's here when we call him,  
Bringing health, love and laughter  
To life now and ever after,  
For the good of us all.*

Whether you are a resident of our city or a visitor, the Christian churches of Worcester hope you will enjoy both the Advent journey and the Christmas adventure.

May God bless you all. ☺





# Church Services

## WORCESTER CATHEDRAL

**Thursday 22 December**

**7.30pm** Carol Service

**Friday 23 December**

**7.30pm** Carol Service

**Saturday 24 December, Christmas Eve**

**8.00am** Holy Communion (said service)

**3.00pm** Crib Service

**5.30pm** Evening Prayer (said service)

**11.30pm** Midnight Eucharist sung by the Cathedral and Voluntary Choirs with a sermon by the Bishop of Worcester

**Sunday 25 December, Christmas Day**

**8.00am** Holy Communion (said service)

**10.30am** Sung Eucharist sung by the Cathedral Choir with a sermon by the Dean of Worcester

**4.00pm** Choral Evensong with Carols

## ST. HELEN'S ON THE HIGH STREET

**Saturday 17 December**

**10.30am–1.00pm** Children's Christmas Workshop (see p29 for details)

**Saturday 24 December, Christmas Eve**

**3.00pm** Christmas celebration for all the family with the Christmas story told with the puppets made at the workshop

## ALL SAINTS', DEANSWAY

**Sunday 18 December**

**10.30am** Informal Christmas Praise service

**6.30pm** Candlelit Carol Service  
Mulled wine and mince pies after the service

**Sunday 25 December, Christmas Day**

**10.30am** Informal Christmas Morning Family Communion Children of all ages are invited! Bring your favourite gift with you

## OLD ST. MARTIN, THE CORNMARKE

**Saturday 24 December, Christmas Eve**

**11.30pm** Midnight Mass and Blessing of the Crib

## ST. ANDREW'S METHODIST CHURCH, PUMP STREET

**Sunday 18 December**

**4.00pm** Carol Service followed by tea

**Saturday 24 December, Christmas Eve**

**11.30pm** Christmas Eve Communion

**Sunday 25 December, Christmas Day**

**10.00am** Family Worship on Christmas Day

## ST. GEORGE'S ROMAN CATHOLIC CHURCH, SANSOME PLACE

**Tuesday 13 December**

**7.30pm** St. Mary's Convent School Carol Concert

**Saturday 24 December, Christmas Eve**

**5.00pm** Children's Mass with opening of the Crib

**7.00pm** Vigil Mass

**11.30pm** Readings of lessons and carols and Midnight Mass

**Sunday 25 December, Christmas Day**

**8.00am** Dawn Mass

**10.00am** Sung Mass

## THE SALVATION ARMY, THE TRINITY

**Sunday 27 November**

**10.00am** Christingle Family Service – A chance for the whole family to learn about and to make a Christingle

**Sunday 4 December**

**10.00am** Advent Service

**Sunday 11 December**

**10.00am** Advent Service

**4.30pm** Young people's Carol Service – A carol service presented by the young people of Worcester Salvation Army

**Sunday 18 December**

**10.00am** Advent Service

**5.30pm** Carols by Candlelight – Sing your favourite Christmas carols accompanied by the Salvation Army Band and the soft glow of candlelight

**Sunday 25 December, Christmas Day**

**9.30am** Christmas Morning Service – A chance to welcome in Christmas Day in a friendly family environment

## WORCESTER BAPTIST CHURCH, SANSOME WALK

**Sunday 18 December**

**10.30am** Family Christmas Service

**6.30pm** Carols by Candlelight

**Sunday 25 December, Christmas Day**

**10.00am** Christmas Family Praise

**5.00pm** Christmas Meditation

## WORCESTER QUAKER MEETING, FRIENDS MEETING HOUSE, SANSOME PLACE

**Sunday 25 December, Christmas Day**

**10.30am** Meeting for Worship

# VISIT THE ROYAL MINT AT ROYAL WORCESTER

For a Range of Beautifully Crafted Gifts at Christmas



The Royal Mint Shop, The Visitor Centre & Museum of Worcester Porcelain,  
Severn Street, Worcester WR1 2NE, England



Hi-fi and home cinema by Naim Audio including the new N-Vi System, exclusive to Audio Excellence in Worcestershire



Other leading brands available. Interest free option available\*  
Independence House, The Trinity, Worcester. Tel: 01905 619059  
www.audio-excellence.co.uk worcester@audio-excellence.co.uk  
\* Subject to status. Written details on request. Sales over £250

## Simply Beautiful

Take time out to indulge yourself with a half day spa package or get your nails done for that special event.

Simply Beautiful's fantastic new premises at 3 St. Swithin's Street offer something of a haven from the busy-ness of the everyday round. At the heart of Worcester's vibrant city centre, the tranquil purple and white décor inside this 17th century building is both refreshing and professional. Expanding from premises in the Hopmarket, Simply Beautiful is now able to offer a variety of therapies in luxurious surroundings.

Kerstin and her team of experienced therapists are all trained in their respective therapies by the International Dermal Institute. They are passionate about the service they provide and want to ensure that every visit will be a memorable one. The ground floor salon is fitted out with the latest in nail stations and a pedicure station, as well as offering a retail selection of beauty products from Nora Bode, Dermalogica, Creative and St. Tropez and others.

Exclusively in Worcestershire, from the specially appointed treatment rooms upstairs, Simply Beautiful offers the ultimate skin improvement experience using Nora Bode oxygen therapy and microdermabrasion. In addition Dermalogica facials and body treatments and St. Tropez spray tanning are available, and for a real treat, try the half-day spa experience.

For more information call Kerstin on 01905 731178 or e-mail [kla.simplybeautiful@virgin.net](mailto:kla.simplybeautiful@virgin.net)



# Christmas shopping made easy...

Just 2 minutes walk from the City Centre!



**Royal Worcester, Severn Street, Worcester WR1 2NE. Tel: 01905 746000**

Christmas shopping hours: Mon - Sat: 9am - 5.30pm. Sun: 11am - 5pm. Christmas Eve: 9am - 4pm.

Closed: Christmas Day and Boxing Day, New Years Day: 11am - 5pm

*Open 7 days a week*

# Vintage Chic with a Contemporary Twist

Chamberlains Worcester presents an entirely new shopping environment where the combination of a sumptuous museum setting, stylish gifts and soft classical music creates an enjoyable and sensual experience.

Quality gifts have been carefully chosen for their individuality and style, hand painted Christmas tree decorations in tin and wood and household decorations in natural materials and colours feature strongly in the seasonal theme.



Chamberlains' overall aim is to promote local and British makers and craftsmen and this autumn sees the introduction of silver heart and fresh water pearl jewellery by Jan Fryer, who lives and works in a small riverside village in Gloucestershire. Each piece is individually crafted making the perfect gift for that special someone in your life.



Rosie Keogh, who studied at Hereford College of Art & Design, has also supplied work for sale. Known for her feminine and imaginative designs her pieces include delicate tiaras, chokers and earrings, all perfect for gifts and party ware.

Each and every turn offers something different, scarves, shawls and wraps in Alpaca, shot silk, cashmere and lambs wool sit amidst English made toiletries and luxurious bath products and flood the room with colour. The store's specialities are reasonably priced fashion handbags, evening bags, jewellery and cards. Ranges are ever changing and you are guaranteed to see something new at every visit.

Sensitively reproduced period clocks deck the walls and luxurious masculine gifts for discerning gentlemen abound. In all there is something for everyone!

Located in the Worcester Porcelain Museum, an independent museum and registered charity, Chamberlains has been created to raise funds for and awareness of the museum and its world famous collections.

Entrance to the museum includes a free audio tour where you can learn about the Company's history, its talented work force and everyday life as you travel in time through the Georgian, Victorian and 20th century galleries.

With the largest collection of Worcester porcelain in the world and a Fascinating Facts Trail this famous museum is guaranteed to delight all ages and offer a relaxing alternative to the bustle of Christmas preparations!

Just 2 minutes walk from Worcester Cathedral and adjacent to Royal Worcester the museum is open 7 days a week. ☺



**For  
special  
gifts  
Open  
seven  
days  
a week**

**Worcester Porcelain  
Museum, Severn Street,  
Worcester WR1 2NE**

**Two minutes walk from  
Worcester Cathedral**

**Tel 01905 746 000**





# Friar Street *Style*

Browse among the stylish shops in Worcester's Friar Street and you'll know that Christmas is coming, but instead of the bustle of the high street, you'll find a more leisured atmosphere.

## 1 POSITIVELY PREGNANT

Positively Pregnant stocks a huge range of maternity underwear as well as sophisticated clothes from European designers, such as this festive skirt and top by Vida Vita.

## 2 EMPORIO

Emporio offers one of the best ranges of designer labels under one roof in the area.

## 3 POCKETS

Pockets offers both leisure fashion and more formal clothes for men by names such as Paul Smith and concentrates on service.

## 4 PERFECTIONS

Perfections specialises in beautiful dresses for bride and bridesmaid as well as shoes, veils and a stunning range of stylish hats for any occasion.

## 5 FELICE

Felice offers an array of unusual day and evening wear including dresses by Sheen such as the one featured.

## 6 LYNNE CRAIG

Lynne Craig offers an exciting collection of ladies designer wear for every occasion.



## 7 INSITU

Insitu stocks modern furniture for sitting, dining and sleeping from leading European designers such as Ekornes and, featured here, Ligne Roset.

## 8 BARBARELLA

Barbarella's luxurious range of lingerie features leading names such as Lise Charnel and includes negligees and nightwear.

## 9 PETIT PETITE

Petit Petite is the place for all you kid's clothing from designer names to a simple T-shirt you will be amazed at the choice on offer.

## 10 BIRTIES

Birties art gallery is filled with David Birtwhistle's own paintings and features shows by other contemporary artists.

## 11 WISH

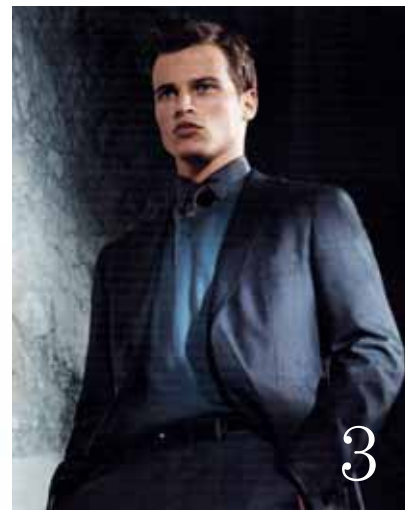
Wish, established in 2002, nestles at the top of Friar Street and is an elegant Georgian-fronted lifestyle shop, offering a large range of designed gifts and cards to suit all tastes and budgets.

## 12 MARK LINLEY

Mark Linley's store is stocked with unique jewellery made of gold and platinum, enhanced with delicate patterning or diamonds and other precious stones.

## 13 ANJA POTZE

Anja Potze sells fine contemporary jewellery and modern classics such as these beautiful Tahitian pearls.



BARBARELLA

ANJA POTZE  
FINE JEWELLERY

Birties

EMPORIO  
WORCESTER

Felice  
DESIGNER CLOTHES

INSITU  
FURNITURE STORE

Lynne  
Craig

Pockets

Perfections

PETIT PETITE

Positively  
Pregnant

MARK A LINLEY


Wish



# La Femme

## OF WORCESTER

Stockists of luxurious lingerie and nightwear since 2001



- Lejaby
- Simone Perel
- Ballet
- Charnos
- Court Royal
- Playboy Intimates
- Allumette
- Arianne
- Naturana
- Silhouette
- Panache
- Wonderbra

La Femme

2-4 Trinity Street, Worcester WR1 2PW  
01905 27214 [www.lafemmeuk.co.uk](http://www.lafemmeuk.co.uk)  
Opening hours Monday - Saturday 10.00am - 5.30pm



# Your M&S Worcester

the  
**Blue**  
room

contemporary giftware



Extra ordinary gifts, cards and home accessories.

Stockists of Nigella Lawson Living Kitchen, Alessi, LSA, Fossil, Ted Baker Watches and Repeat Repeat.



6 St. Swithin's Street, Worcester  
Tel: 01905 734834  
[www.blueroomgifts.co.uk](http://www.blueroomgifts.co.uk)

Christmas is all about giving and receiving.

And who else can you trust to 'give' you fantastic gift ideas, while you 'receive' fantastic service?

This year our Christmas gift shop will be located on the ground floor of our foods store, with the biggest range ever.

Let us take away the pressure and trust us to make your Christmas the best ever.

At 'your M&S' we know what Christmas is really about!

**MARKS & SPENCER**

39 & 49 High Street, Worcester. 01905 723603

# A GIANT OF A PANTO



## Fe-Fi-Fo-Fum – just how can a young boy get the better of the enormous giant?

For all of you out there who are lovers of traditional fairy tales, this is a pantomime you must not miss. Jam-packed with all the ingredients you are looking for to entertain the whole family this Christmas, Jack and the Beanstalk really will be a giant of a panto (well it's best to get the puns in early!).

Returning for a third year in a row, director Paul Tate has written yet another sparkling story, with witty script to entrance the youngest and the oldest watchers. Setting the story against a backdrop of stunning scenery and lavish costumes and with his usual mixture of high-energy song and dance routines sourced from musicals and modern pop songs, Paul is all set to stage another winner. With plenty of Fe-Fi-Fo puns for children and the best panto cow you've ever seen the tension is all set to mount as Jack scrambles up the huge beanstalk and into another land. Will the Giant find him or will Jack be able to restore his family's lost fortunes?

Britt Eckland, Hollywood Actress, Bond Girl and West End actress will join the cast of the Swan Theatre's Jack and The Beanstalk as Fairy Kindheart. Familiar faces amongst the cast are Sarah-Jane Bourne, Daniel Whitley and Chris Vincent all making a welcome return to Worcester after last year's successful pantomime Cinderella, whilst new face Kirsty Holmes will be making her Worcester debut this year playing the part of Jack.

Expect plenty of audience participation, stunning costumes and more than a sprinkling of pantomime magic!




## Jack and the Beanstalk

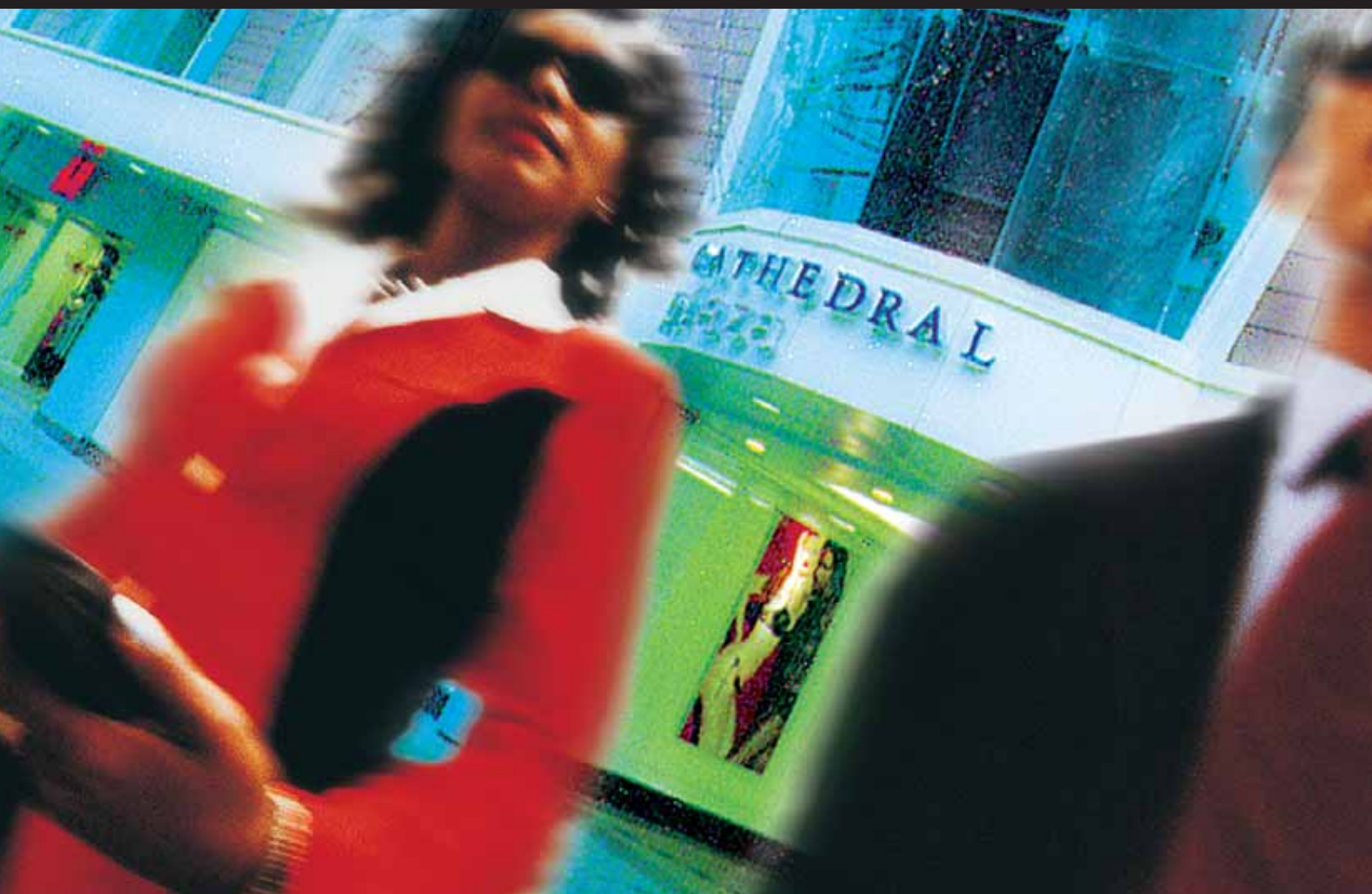
7TH – 28TH December at 10.30am/1.30pm/2pm/7.00pm

Swan Theatre

Tickets from £8-£13.50

Huntingdon Arts Box Office 01905 611427





At Cathedral end of High Street, home to



and many other leading High Street Stores

Thursday Late Night Opening to 9.00pm from 17 November  
Sundays 10.30am to 4.30pm from 20 November

350 city centre car parking spaces

Cathedral Plaza Shopping Centre wishes a  
very Merry Christmas to all its customers

# Season's Greetings

As we prepare to send millions of greetings cards again this Christmas, we take a look at how the design of cards has changed over the years and how some things have come full circle.

## FIRST BEGINNINGS



The first commercially-produced Christmas card was designed by artist John Calcott Horsley in 1843, a commission from his friend Sir Henry Cole, assistant at the Public Records Office and later founder of the V&A Museum in South Kensington. Sir Henry found that penning his customary Christmas letters took up rather more time than he could spare and asked his friend to create a card for this purpose with a single message which could be replicated to send to his family and friends. This first card depicted in the central panel a family enjoying the Christmas festivities and raising a toast to their absent friend, presumably the sender of the card, but also showed charitable acts, clothing the naked and feeding the hungry in two side panels, with the whole set inside a border of intertwined trees, ivy and leaves.

## THE IDEA CATCHES ON

In the following years many others were to copy this idea, with holly and mistletoe making its first appearance on a Christmas card in 1848 and having been part of the stock-in-trade ever since. Early cards were made on a flat piece of card, about the size of a standard postcard and used a lithographic printing process which required a number of passes over a specially prepared stone to achieve the different colours used. This time-consuming process was fairly expensive, so that the surplus cards from Sir Henry Cole's first 1000 were sold for one shilling (five pence) each, a huge sum compared to earnings at the time. Before the Penny Post was invented in 1870, the cost of posting the card added to the cost of purchase and meant that the sending of cards was initially limited to the upper classes.

By the 1850s though, printing processes had been developed and cards could be produced much more cheaply and using many colours at once. More and more designs were created and this fuelled the level of sales, so that by 1862 Charles Goodall & Son of Camden Town was able to offer a broad selection of Christmas cards to British people, and by the 1880s the number of cards sold annually had already reached millions. By this stage, leading manufacturers, such as Raphael Tuck and Marcus Ward, were commissioning the best-known artists of the day, Kate Greenaway among others, to create pictures specially for their cards.

In line with Victorian tastes many of the designs were very ornate. Often in unusual shapes, such as baskets, shoes or fans, they were adorned with ribbons or cords to enable them to be hung up or had complex folds to allow them to stand up. Each inscribed with one or even several messages, with poems or carols the designs became ever more intricate with flaps and folds which lifted to reveal a different part of the message, and later mechanical cards with moving parts allowed the recipient to pull a tab to move part of the card out of the way to reveal another picture or a special message.



Copy of a card first published in the 1890s Available at Past Times

Made of many different materials such as satin and lace as well as paper, the Victorians also introduced frosting in the 1870s and silk fringes introduced in the following decade became hugely popular. As new machines were invented which could create paper lace, this too became a popular element of many cards. The first card with pictures of Christmas trees were printed in the late 1890s and, surprisingly given that the festival of Christmas is a religious one, the most popular cards did not depict religious themes until the 1890s.



Copy of a card published in 1903  
Available at Past Times

*Visit us and be inspired  
by lots of ideas and a  
huge choice*

- Sia
- Bridgewater
- Jellycat
- Crabtree & Evelyn
- Leonardo

*Find us on the  
roundabout by the  
Cathedral, Worcester*

2 High Street, Worcester WR1 2QW  
Tel: 01905 28250 Fax: 01905 611645  
Email: m&k@cornucopia-worcester.co.uk

10 Bards Walk  
Stratford-upon-Avon CV37 6EY  
Tel: 01789 299494 Fax: 01789 298716

[www.cornucopia-worcester.co.uk](http://www.cornucopia-worcester.co.uk)


**CORNUCOPIA**  
GIFTS AND HOME  
INTERIORS





# A Forrest-Hay Ltd


GOLDSMITHS-SILVERSMITHS-VALUATION SPECIALISTS



31 The Cross,  
Worcester WR1 3PZ  
Tel: 01905 23771

24 St. Andrews Square,  
Droitwich WR9 8HE  
Tel: 01905 776070

National Association of Goldsmiths



website: [www.jewellery-4u.co.uk](http://www.jewellery-4u.co.uk) email: [enquiries@forresthay.co.uk](mailto:enquiries@forresthay.co.uk)

The perfect time to get that very special gift...




Christmas exhibition  
St. Helen's Church  
High Street, Worcester  
Between Cathedral and Guildhall

December 1/2/3  
10.00am – 5.30pm




The Swan Theatre Worcester  
in association with  
Paul Tate Productions  
present

**A GIANT OF A PANTOI**



**Jack and the Beanstalk**

Written and Directed by **PAUL TATE**




Staring  
**Britt Eckland**

**SWAN**

**7th - 28th December 2005**  
**Box Office 01905 611427**

Swan Theatre, The Moors, Worcester, WR1 3EE [www.buzzingdonarts.com](http://www.buzzingdonarts.com)

AUTHENTIC  
**ROBIN ELT SHOES**  
FOOTWORK SINCE 1872



**ECCO SHOP**  
50 The Shambles,  
Worcester WR1 2RE  
Tel/Fax: 01905 729515

**ROBIN ELT SHOES**  
7 Church Street,  
Malvern WR14 2AA  
Tel: 01684 573904



Copy of a card first published in 1915 Available at Past Times

#### 20TH CENTURY CHANGES

As the fashions in clothing and furniture changed with the coming of the Edwardian era, showing simpler lines and making a stronger design statement, so did the style of Christmas cards. Much of the frosting and fringing of the Victorian period disappeared to be replaced by simple folding cards with one image such as the designs shown here from the early years of the twentieth century.



1950s



1961

And whereas the Victorians had been happy to have a whole variety of pictures not at all related to Christmas, such as summer flowers and so on, the pictures chosen now depicted winter scenes and landscapes and all the familiar images we associate so closely with the festive season now.

As the century progressed, the paper that cards were printed on became thinner, especially during the war years, and it was often folded twice or had other layers of paper inside. By the early 1950s some of the Victorian complexity had crept

back, with little folds and cut-outs, ribbons and embossing featuring more frequently, before disappearing again to be replaced by new shiny papers bearing photographs of Christmas decorations with large embossed gold writing.

What is particularly noticeable during the 1960s and 1970s is the vividness of the colours after the pastel and muted shades of the 1950s. "Cute" pictures of animals and angels made their mark with branded cards such as the "Love is.." and later with Country Companions series whose images



1964

figured not only on cards but on whole ranges of matching ornaments and household items. Alongside these, traditional images of robins and holly, nativity and epiphany scenes also abound.

Moving into the 1990s and the first years of the 21st century it is less easy to discern clear fashions and trends as card makers feature all sorts of designs, borrowed from earlier periods as well as innovative new ideas from contemporary designers.

But the influence of the Victorian style is still clearly visible with hundreds of replicas of early cards finding their way onto the shops shelves each year, including many attractive copies such as the ones illustrating this article which are available from specialist retailer Past Times in Worcester's High Street.



Copy of a 1930s card Available at Past Times



2000

#### CHARITY CHRISTMAS CARDS

The first Christmas card produced to benefit a charity was printed by Unicef in 1949. The picture chosen was not designed by a professional artist, but by a seven-year-old girl from the former Czechoslovakia. Since then the market for charity cards has grown and grown until it is estimated that around 30-50% of all cards sold annually are sold for charity, many through mainstream stores and directly by the charities themselves, but also through the Cards for Good Causes network which runs over 300 special Christmas card shops each year, including two in Worcester (at Old St. Martin in the Cornmarket and St. Helen's on the High Street – for more information see advert on page 28). With Christmas card sales now exceeding 3 billion each year, this is a sizeable part of the market.



Victorian replica Available from Past Times



# Magical Shopping on Thursdays

Make the most of late night Thursday shopping – enjoy a relaxed atmosphere, music and entertainment and special offers.

Late night shopping in Worcester is on Thursdays until 9pm, and the Thursdays in Worcester this year are going to be special. With a full programme of musical entertainment from jazz to carol singing, and scintillating street theatre, special offers and feature events, Thursday is definitely the day to do your Christmas shopping.

Starting on 17th November, the festive season kicks off with the switching on of the Christmas lights, bags of musical entertainment around the city throughout the evening for all shoppers and in particular the less able with their volunteer helpers from a variety of organisations including Worcester Rugby Club. The highlight of the evening will be the arrival of a very important visitor to Worcester (see CrownGate information on the next page).



Thursday 24th November brings the Victorian Christmas Fayre to the city with its opening ceremony in the Cornmarket starting at 5.45pm and a chance to see all the stalls and stallholders resplendent in their Victorian costumes until 9.30pm as well as plenty of other shopping opportunities all around the city centre.

Magic post boxes will also be appearing around the city centre, where Worcester's younger citizens can post off a letter to Father Christmas and, we have it on the excellent authority of Santa's chief helper, Santa will write back to you within the week. Collect a Santa form from **Osborne's** in Mealcheapen Street, **Formative Fun** in Charles Street, **Marks & Spencer** in the High Street or the **Post Office** in Foregate Street. Ask an adult to fill it in for you. Write your letter to Santa and post the letter and the form in one of the magic post boxes. The chief helper has also told us that he expects the boxes to be in



- Reindeer Court
- The Tourist Information Centre at the Guildhall
- Hodsons in High Street
- CrownGate, Friary Walk

Every Thursday until Christmas a number of the cafés in the city centre will be giving away a free mince pie with every cup of tea or coffee you buy, so why not take the weight off your feet for a little while and enjoy a break before setting off to complete the shopping. Free mince pies will be available in the following cafés:

- Hodsons in High Street
- Marks & Spencer in High Street
- EMX in City Arcade
- Costa Coffee on The Cross
- Carwardines in Pump Street
- Café Nero in The Shambles
- Aroma in Lychgate Mall



On three Thursdays before Christmas (8th, 15th and 22nd), there will be a charity gift wrap service in aid of St. Richard's Hospice between 5.30pm and 8pm. So for those of you who hate wrapping presents, all you have to do is turn up with the gift and we will do the rest, in exchange for a donation towards the work of the hospice. If you want to choose your own wrapping paper and ribbon, please bring those with you too. The Charity Wrap will take place in Cathedral Plaza.



## Free Car Parking on Thursdays

On Thursdays from 17th November until Christmas you can park free of charge in the City Council's car parks from 6pm onwards. For full details of participating car parks see local press.



Watch for further details of special events in the local press.

# Christmas on your doorstep

There's no need to scour the country for that unique gift this Christmas. You'll find something special, right on your doorstep at CrownGate.

Whether you are searching for an unusual present, looking for the season's best trimmings or gearing up for that inevitable last minute rush, CrownGate has it all. With more than 70 stores, you'll find a great mix of individual boutiques and your favourite High Street names. And getting here's easy too. We have more than 750 parking spaces, as well as a great 'park and ride service', making CrownGate your gateway to all that Worcester has to offer.

And don't miss out on the great Christmas entertainment too. Bring the whole family and enjoy the magic and excitement of our 'Big Switch On' which, this year, will be all the more special for the presence of the loveable, green ogre, Shrek.

The switch-on also marks the start of our late night shopping, designed to ease the festive

frenzy for busy people. After work, after dinner, or after the kids have gone to bed, we're opening our doors, especially for you, every Thursday night until Christmas. So, when seven days a week just aren't enough, join us till 9pm on Thursdays and take advantage of the fantastic atmosphere of CrownGate.

On Sunday 20th November, the Christmas fun continues as Father Christmas rides into town. Join us in welcoming him at 1pm as he makes his way up the High Street, along The Cross and down into Friary Walk where he'll be busy in his grotto until 23rd December. Not just for the kids, you are never too old to get excited about the enchantment of Father Christmas!

So why travel further? When the countdown to Christmas begins, come to CrownGate for a great shopping experience. 🌟



## Come and enjoy the Magic of Christmas at CrownGate, Worcester

There's the familiarity of all your favourite stores... from the big ones... to the little ones, there are restaurants and tearooms to take the weight off your feet...



and there's Father Christmas in his grotto to give the kids a treat.

It's your kind of Christmas Shopping, so why on earth go anywhere else?

### COUNTDOWN TO CHRISTMAS

**THURS 17 NOV** **The Big Switch On** with guest celebrity **SHREK** ★

**THURSDAY 17<sup>TH</sup> NOVEMBER 6.00pm**

*The lights are on – and everybody's there! Don't miss the magical moment. Let the festivities begin with the start of Late Night shopping.*

**SUN 20 NOV** **Father Christmas** ★ arrives in town

**SUNDAY 20<sup>TH</sup> NOVEMBER 1.00pm**

*Bring the children to experience all the excitement of Father Christmas's arrival in his magic sleigh – and watch him settle in his grotto.*

*It's all right here on your doorstep. So come home for Christmas this year.*



Open 7 Days • 750 Car Park Spaces • Park+Ride • Shop Mobility • Tel. 01905 610065 • [www.crowngate-worcester.co.uk](http://www.crowngate-worcester.co.uk)



# ALLSORTS

## ... OF COURSES

### COLLEGE OPEN EVENINGS

Tuesday 15th November 2005 5.00pm - 8.00pm  
Wednesday 25th January 2006 5.00pm - 8.00pm  
Thursday 27th April 2006 5.00pm - 8.00pm

For further information  
**01905 743456**  
WORCESTER COLLEGE OF TECHNOLOGY

## A MAGICAL CHRISTMAS EXPERIENCE

**Real Live Reindeer** - See them from 12 noon November 6th  
**Santa's Snow Queen's Palace Grotto** - From 10.30am November 12th  
**See Santa Claus** - Everyday throughout December\*  
**Breakfast with Santa** - December weekends  
**Tea with Santa** - December weekdays  
*Plus all the gift ideas you could imagine.*

### WORCESTER GARDEN Centre

Droitwich Road, Worcester WR3 7SW  
Telephone (01905) 451231 Fax (01905) 755371  
Email: mail@worcestergardencentre.co.uk Web: www.worcestergardencentre.co.uk  
Open Mon-Sat 9am-6pm Sun 10.30am-4.30pm Late night Thurs 'til 9pm  
\*Until noon on 24th December

## Worcestershire Library and History Centre

*Who do you think you are?*

**Have you ever wanted to get back to your roots?**

WLHC is the ideal place to research family or local history, whether your ancestors were from Worcestershire or further afield.

We have:

- CD-ROMs, microfilm, microfiche and books to help trace your ancestors
- Reference books on family and local history
- Trade directories from 1790 onwards
- Maps of Worcestershire from 17th Century onwards
- Photographs of Worcestershire
- Worcestershire newspapers on microfilm
- Free internet access
- Attractive shop area with books, gifts and much more
- Drinks vending machine and seating area
- Wheelchair access and disabled toilet facilities

Worcestershire Library and History Centre  
Trinity Street • Worcester • WR1 2PW  
Tel: 01905 765922 • Fax: 01905 765925  
WLHC@worcestershire.gov.uk

We are open: Monday and Friday.....9:30 - 7:00  
Tues, Wed, Thurs.....9:30 - 5:30  
Saturday.....9:30 - 4:00

[www.worcestershire.gov.uk/records](http://www.worcestershire.gov.uk/records)

## Christmas Time is Present Time

Why not make a mini-break of it with a memorable stay in the elegant Fownes Hotel; an ideal base close to the City Centre and perfect for Christmas Shopping.

The Fownes Hotel is just a two minute walk to Worcester Cathedral and the Shopping Centre. It is the perfect base to explore the wealth of different shops and stores that are unique to Worcester and where a warm welcome allows you to unwind and put your feet up.

### Fownes Hotel

City Walls Road  
Worcester WR1 2AP

Tel: 01905 613151  
Fax: 01905 23742  
[www.fowneshotel.co.uk](http://www.fowneshotel.co.uk)



# What's on in Worcester this Christmas

There's more to Worcester than shopping - read on for information on loads of exciting events taking place before Christmas.

### EXHIBITIONS AND CONTINUING EVENTS

**Every Friday and Saturday evening from September to April**

**GHOST WALK OF WORCESTER, 8pm**  
This spine-chilling walk departs from the Guildhall and is definitely not for the faint-hearted! Book in advance on 01905 759499.

**22nd October - 27th November**

**WORCESTER SOCIETY OF ARTISTS ANNUAL EXHIBITION**  
Worcester City Art Gallery and Museum, Foregate Street  
A wide range of paintings and ceramics by local artists, many of which are for sale.

**27th October - 17th December**

**CARDS FOR GOOD CAUSES**  
In St. Helen's on the High Street and Old St. Martin's in The Cornmarket  
A chance to choose from hundreds of Christmas cards sold in aid of the UK's leading charities, including local charities. See advert on page 28 for details.

**3rd December - 4th February**

**BARRIE COOK - A PAINTER'S JOURNEY**  
Worcester City Art Gallery and Museum, Foregate Street  
This is an exhibition for those who are at home with ambiguity, or who enjoy a mystery! These strange and powerful paintings require time, a certain quality or stillness and attention.

**CHRISTMAS HOLIDAY ACTIVITIES**  
Worcester City Art Gallery and Museum, Foregate Street  
The Art Gallery and Museum will be running a series of workshops for children in the Christmas holidays. For further information please contact Angie Bishop, Visitor Services Manager on 01905 25371.

**PARK AND RIDE SPECIAL CHRISTMAS SERVICES**  
See display advert on the inside back cover of this magazine for full information on additional seasonal park and ride services from County Hall and Christopher Whitehead School on Saturdays before Christmas, and extended service times on the normal Perdisswell (Worcester North) park & ride route.

**Monday 31st October**

**COOKING WITH ELVIS**  
Swan Theatre, 7.30pm  
Acclaimed Hull Truck Theatre Company returns to the Swan Theatre with a stunning original stage play by Lee Hall, the writer behind Billy Elliot. Part knockabout farce, part cookery course, and part philosophical investigation, Cooking with Elvis, celebrates the three great pleasures in life; sex, food and the 'King'. Over 16s only.

**Tuesday 1st November**

**COOKING WITH ELVIS**  
Swan Theatre, 7.30pm  
(For details see Monday 31st October).

**Wednesday 2nd November**

**COOKING WITH ELVIS**  
Swan Theatre, 7.30pm  
(For details see Monday 31st October).

**Thursday 3rd November**

**COOKING WITH ELVIS**  
Swan Theatre, 7.30pm  
(For details see Monday 31st October).

**Friday 4th November**

**COOKING WITH ELVIS**  
Swan Theatre, 7.30pm  
(For details see Monday 31st October).

**Saturday 5th November**

**THE JESTER AND THE WICKED WITCH (CHILDREN'S THEATRE)**  
Swan Theatre 10.30am & 11.45am  
Why has Wanda, the Wicked Witch from Wichenford taken away Jester Minute's sense of humour? Can Princess Tania and the two royal pages get it back in time for the anniversary party and save the jester from imprisonment?

**COOKING WITH ELVIS**  
Swan Theatre, 7.30pm  
(For details see Monday 31st October).

**Sunday 6th November**

**WORCESTER FARMERS' MARKET**  
Royal Worcester, Severn Street, 9am-2pm  
The best in local seasonal produce brought to you direct by the growers and makers.

**REAL LIVE REINDEER**  
Worcester Garden Centre, Droitwich Road (A38) opposite the Park & Ride - see map on page 30 from 12 noon  
Meet the reindeer and see the Centre transformed into a magical Christmas experience.

**ELEANOR PERCY (VIOLIN) & IRINA LYAKHOVSKAYA (PIANO)**  
Huntingdon Hall, 3pm  
Eleanor Percy from Great Malvern and Irina Lyakhovskaya from St Petersburg, performing as a duo. They have both performed as a duo at such venues as The Royal Opera House, Covent Garden, The National Theatre, Wigmore Hall and St John's Smith Square. Their performance for Worcester Concert Club features pieces by Mozart, Brahms, Beethoven and Poulenc.

**Tuesday 8th November**

**KARINE POLWART**  
Huntingdon Hall, 8pm  
Winner of 'Best Album', 'Best Original Song' and the 'Horizon Award' for Best Emerging Artist at the BBC Radio 2 Folk Awards 2005, Karine Polwart has established herself at the forefront of the UK folk-roots scene.

**Thursday 10th November**

**BACKTRACKIN' WITH BILLY MITCHELL - THE JOURNEY**  
Huntingdon Hall, 8pm  
As Lindisfarne's career drew to a close in 2003, Billy Mitchell began reflecting on the people, places, adventures and most of all, the songs that had given his life on the road such vitality and excitement. Backtrackin' with Billy Mitchell is a feast of music, memories and humour.

**RED HOT COUNTRY**  
Swan Theatre, 7.30pm  
A hand clapping, foot stomping fusion of the greatest traditional & country rock hits. This sizzling showdown includes many country classics through to the likes of The Dixie Chicks, Shania Twain and Garth Brooks, featuring the very best upbeat country hits from the charts world over.

**Friday 11th November**

**A BLACK COUNTRY NIGHT OUT**  
Huntingdon Hall, 7.30pm  
The cream of Black Country entertainment come together again for 'A Black Country Night Out'. Together they will perform a 'Bostin' two-hour show full of laughter and song with a few surprises in store.

**Saturday 12th November**

**SANTA'S SNOW QUEEN'S PALACE GROTTO**  
Worcester Garden Centre, Droitwich Road from 10.30am  
Visit the Grotto and try the Snow Queen's ride.

**SING-A-LONG-A SOUND OF MUSIC**  
Swan Theatre, 7.30pm  
For those of you not yet converted, Sing-a-Long-a-Sound of Music is a screening of the classic Julie Andrews film musical in glorious, full screen Technicolor, complete with subtitles so everyone can sing along! So get those vocal cords warmed up and hurry down for the perfect night out.

**JIMMY WEBB**  
Huntingdon Hall, 8pm  
Rare UK tour for US songwriting legend. Catch the master songwriter performing an intimate show featuring all his most famous compositions, including 'Wichita Lineman', 'By The Time I Get to Phoenix', 'Galveston' and many more. First tour since 1999, a real must see!

**Sunday 13th November**

**JOHN WILLIAMS**  
Huntingdon Hall, 3pm  
John Williams can be regarded as the foremost ambassador of the guitar. He has toured the world playing both solo and with orchestras and features regularly on radio and TV, regularly recording for Sony Classical.

**Tuesday 15th November**

**THE ST JOHN'S PLAYERS PRESENT The Cemetery Club**  
Swan Theatre, 7.30pm  
Ida, Lucille and Doris are part of a club - the Cemetery Club. Every month they meet at Ida's New York house for tea, and then trundle off to the Cemetery Club to remember the good times and gossip with their late husbands. This touching play about three superannuated, feuding Jewish women is funny, wise and gloriously witty.

**AN EVENING WITH BOBBY VEE**  
Huntingdon Hall, 8pm  
Bobby Vee, with his band The Vees, will perform the hits that made him famous, including 'Take Good Care of My Baby', 'The Night Has A Thousand Eyes', 'Run To Him', 'More Than I Can Say' and 'Rubber Ball'. He will relate stories from his long career and will perform a tribute to Buddy Holly, whose untimely death led to the bittersweet launch of Bobby's career when he was chosen to replace Buddy on tour.

**Wednesday 16th November**

**THE ST JOHN'S PLAYERS PRESENT The Cemetery Club**  
Swan Theatre, 7.30pm  
(For details see Tuesday 15th November).

**Thursday 17th November**

**WORCESTER SWITCHES ON THE CHRISTMAS LIGHTS**  
Guildhall, from 5.30pm onwards  
With Mayor of Worcester Cllr Aubrey Tarbuck. Come into town and enjoy the relaxed High Street atmosphere, enjoy the music and shopping and stop off for a free mince pie when you're getting tired (see page 22 for more information on what's happening every Thursday until Christmas).

**CrownGate, 6pm**  
Come and meet Shrek, in Worcester for the first time to help switch on CrownGate's Christmas lights. For more information see page 22.



# A New Year... A New Opportunity... A New You!

The holiday season is upon us!  
As you sit back and take that well-deserved rest... why not consider some of the new opportunities for 2006.

Have you ever considered enrolling on a course?

Would you like to improve your prospects by gaining a qualification at degree or postgraduate level?

Would you like to meet new friends with similar interests?

Why not join us for our Open Evening in January and find out how a New Year can mean a New You!

**OPEN EVENING**  
Part-time Study Opportunities  
Thursday 12 January 2006  
Call us on 01905 855141  
or e-mail: [study@worc.ac.uk](mailto:study@worc.ac.uk)  
Or just come along on the night

You can study nearly all of our programmes on a flexible part-time basis and you don't always need formal qualifications to get started - previous experience and skills can count towards your degree.

Choose from a wide range of options. If you wish, you can get started with just one module to see how study fits with your other commitments.

[www.worcester.ac.uk](http://www.worcester.ac.uk)



R Cajun



Vin Garbutt



Sing-a-Long-a-Sound of Music



Christmas Fayre

## Less Able Shopping Evening:

an enjoyable, festive evening when the elderly and people with disabilities can shop with help provided by volunteers, from 5.30pm – 9pm. Musicians will be creating a sparkling atmosphere to start the Christmas season and free refreshments will be available from participating shops. To book and for more information contact Sally Ellison on 01905 24741 or e-mail [sally.wcvb@btconnect.com](mailto:sally.wcvb@btconnect.com)

## THE ST JOHN'S PLAYERS PRESENT THE CEMETERY CLUB

Swan Theatre, 7.30pm  
(For details see Tuesday 15th November).

## JOHN ETHERIDGE & KIT HOLMES

Huntingdon Hall, 8pm  
John Etheridge was the guitarist for the celebrated jazz violinist Stephane Grappelli and has also worked with the jazz greats; Barney Kessel, Herb Ellis, Dizzy Gillespie and Tony Williams.

## Friday 18th November

### LIGHTS OF LOVE FOR ST. RICHARD'S HOSPICE LIGHTS OF LOVE SERVICE

Worcester Cathedral, access from 6.30pm, services starts at 7pm  
Join in this moving service to remember loved ones, and for a donation dedicate a special light to them on the Lights of Love Tree at St. Andrew's Spire (Glovers' Needle) where the Cathedral congregation will process after the service. For more information, please contact Alison Weston on 01905 763963 or e-mail [appeals@strichards.org.uk](mailto:appeals@strichards.org.uk)

### THE ST JOHN'S PLAYERS PRESENT THE CEMETERY CLUB

Swan Theatre 7.30pm  
(For details see Tuesday 15th November).

### R CAJUN & THE ZYDECO BROTHERS

Huntingdon Hall, 8pm  
R Cajun took the music of the Louisiana Bayou and kick started the Cajun scene here in the UK over 25 years ago. They have headlined almost every festival and major venue throughout the UK and Europe and never fail to leave audiences in any doubt that they are our finest exponents of Louisiana Cajun and Zydeco music.

## Saturday 19th November

### WORCESTER COUNTRY MARKETS

St. Helen's Church, High Street

Sale of goods.

### THE ST JOHN'S PLAYERS PRESENT THE CEMETERY CLUB

Swan Theatre, 7.30pm  
(For details see Tuesday 15th November).

### VIN GARBUTT

Huntingdon Hall, 8pm  
Vin Garbutt is one of the best-known performers on the music scene today and one of the most sought after. His songwriting is witty and powerful, tackling thought-provoking issues that other prefer to avoid. He is an accomplished guitarist and a fine whistle player.

Huntingdon Hall and  
The Swan Theatre  
Box Office 01905 611427

## Sunday 20th November

### FATHER CHRISTMAS ARRIVES IN TOWN

CrownGate, 1pm  
Bring the children to experience all the excitement of Father Christmas's arrival in his magic sleigh – and watch him settle in his grotto.

## SUNDAY SHOPPING

All around the city centre from 10.30am to 4.30pm. All the shops which normally open on Sundays and lots more besides will be trading. Most will be open from 10.30am – 4.30pm, but there are various opening hours so please contact stores directly for precise information. Shop phone numbers are available from [www.visitworcester.com](http://www.visitworcester.com)

## Tuesday 22nd November

### EDUCATING RITA

Swan Theatre, 7.30pm  
Swan Theatre Amateur Company presents a story about a working-class Liverpudlian girl's hunger for education. Frank is a tutor of English whose disillusioned outlook on life drives him to the bottle. Rita is a hairdresser, hungry to find some meaning to life.

### TIME TRAVEL: FACT OR FICTION

Huntingdon Hall, 7.30pm  
The idea of time travel has long been a topic of discussion and the subject matter of many a science fiction book or film. But it might come as a surprise to learn that it is also currently a serious topic of study among scientists. Jim Al-Khalili is theoretical nuclear physicist at the University of Surrey and a popular science author and broadcaster.

## Wednesday 23rd November

### EDUCATING RITA

Swan Theatre, 7.30pm  
(For details see Tuesday 22nd November).

### ENGLISH SONG RECITAL

Huntingdon Hall, 7.30pm  
John Mark Ainsley had been known and admired by Worcester audiences before his rapid rise to a celebrated international career. He is in great demand on the operatic stage and has an extensive list of recordings. This evening he will be performing a varied programme including operatic arias by Handel and songs by Purcell, Vaughan Williams, Ireland, Quilter and Elgar.

## Thursday 24th November

### WORCESTER CHRISTMAS FAYRE, Cornmarket, Friar Street, 5pm-9.30pm

The Midlands' most prestigious Victorian themed street market with the finest Christmas crafts, gifts, food and entertainments in the heart of historic Worcester.

### WORCESTERSHIRE YOUNG MUSICIAN OF THE YEAR

Huntingdon Hall, 7pm  
The Worcestershire Young Musicians 2005 event presents an evening of excellent music making by the county's talented young soloists and ensembles. Following preliminary auditions, the selected finalists in both soloist and ensemble categories will play for titles of Worcestershire Young Musicians 2005. The winners of this award will be presented with specially commissioned trophies.

## EDUCATING RITA

Swan Theatre, 7.30pm  
(For details see Tuesday 22nd November).

## Friday 25th November

### WORCESTER CHRISTMAS FAYRE, Cornmarket, Friar Street, 12.30pm-9.30pm

The Midlands' most prestigious Victorian themed street market with the finest Christmas crafts, gifts, food and entertainments in the heart of historic Worcester.

### NERO STRING QUARTET

Worcester City Art Gallery and Museum, Foregate Street, 7pm-8pm

The Art Gallery and Museum will be open until 8.30pm. Browse in the shop and Craftcase for a special gift or relax in the tranquil Balcony Café. For more details contact the Gallery on 01905 25371.

### EDUCATING RITA

Swan Theatre, 7.30pm  
(For details see Tuesday 22nd November).

### THE BLUES BAND

Huntingdon Hall, 8pm  
The Blues Band (Paul Jones, Dave Kelly, Tom McGuinness, Gary Fletcher and Rob Townsend) are simply the best purveyors of the Blues in the UK today. They've released 17 or so albums, culminating in their current release 'Thank you Brother Ray' a tribute to the late great Ray Charles. Their extensive canon of recorded material includes a large catalogue of original songs by Willie Dixon, Muddy Waters, Howlin'Wolf and many more.

## Saturday 26th November

### OPEN DAY

St. Helen's Church, High Street, 10am-3pm  
Enjoy a few minutes peace and quiet in this ancient church. Sit down and relax as you enjoy refreshments from the selection available.

### VICTORIAN PARLOUR

Old St. Martin's Church, The Cornmarket, 10am-4pm  
Visit this beautiful church and enjoy refreshments, cake and other stalls, and entertainment – all in the Victorian style!

### CHRISTMAS FUN AND WORKSHOPS

Worcester City Art Gallery and Museum, Foregate Street, 10am-4pm  
Visit Father Christmas in his Victorian grotto or join in the FREE activities, suitable for all the family. Make Victorian Christmas decorations for our tree in the activity space or to take home with you. Why not try your hand at some of the other craft activities we have on offer. Contact the Gallery for more information on 01905 25371.

### WORCESTER CHRISTMAS FAYRE, Cornmarket, Friar Street, 10.30am-7.30pm

The Midlands' most prestigious Victorian themed street market with the finest Christmas crafts, gifts, food and entertainments in the heart of historic Worcester.

### PIANO RECITAL BY BEN DUNNETT

All Saints' Church, Deansway, 6pm-7pm  
This local pianist welcomes you to an informal recital of classical piano music including works by Haydn, Bach, Brahms and Rakhmaninov. Refreshments available. Advance bookings on 01905 641009 or on the door.

## EDUCATING RITA

Swan Theatre, 7.30pm  
(For details see Tuesday 22nd November).

### RICHARD DIGANCE

Huntingdon Hall, 8pm  
Richard Digance remains one of Britain's top entertainers, a fact confirmed by his 2003 sell-out tour. His one-man show has won him acclaim for over a quarter of a century. He received a BAFTA nomination for TV Entertainer of the Year in 1986, and more recently, the Gold Badge award from the British Academy of Composers and Songwriters, in recognition of 30 years of service to the music industry.

## Sunday 27th November

For church and carol services see page 10.

### CHRISTMAS FUN & PUPPET THEATRE

Worcester City Art Gallery and Museum, Foregate Street, 10am-4pm  
Visit Father Christmas in his grotto or join the Blue Sky Theatre Company for their stunning puppet theatre and workshop (9.30am-12 noon) for the under 5s. Advance booking essential - for more information and to book phone the Gallery on 01905 25371.

### WORCESTER CHRISTMAS FAYRE, Cornmarket, Friar Street, 11am-5pm

The Midlands' most prestigious Victorian themed street market with the finest Christmas crafts, gifts, food and entertainments in the heart of historic Worcester.

## Tuesday 29th November

### GLENN TILBROOK & THE FLUFFERS

Huntingdon Hall, 8pm  
As one half of the songwriting team behind the beloved band Squeeze and now a successful solo artist, Glenn Tilbrook has perfected a signature style which is marked by brilliant melodic invention, cheeky humour and slice-of-life pathos, all wrapped up with unshakeable hooks and his golden-boy tenor.

### SIGN IN FOR MURDER

Swan Theatre Studio, 7.30pm  
Swan Theatre Amateur Company Presents a Murder Mystery by Angela Landon. Two newly weds arrive on a misty October evening at a remote Dartmoor inn and cause unexpected reactions among the staff. Why is the landlady so unwelcoming? What is the Chef concealing? How long will it be before events reveal hidden agendas? And who is driven to murder?

## Wednesday 30th November

### SIGN IN FOR MURDER

Swan Theatre Studio, 7.30pm  
(For details see Tuesday 29th November).

### MARTIN STEPHENSON

Huntingdon Hall, 8pm  
Martin Stephenson is a supremely gifted singer, songwriter, musician and performer whose career stretches back almost twenty years. He convened The Daintrees in the early 1980's. Martin remains a gifted, but self-effacing individual, still refining his prodigious musical skills. His is a maturing talent in its prime.



**D.L. OGLE Ltd**  
HOMEOPATHIC & DISPENSING CHEMIST

*Introducing Annaleece Jewellery made with real Swarkovski Crystals*

*Available instore now!*

18-20 ST JOHNS WORCESTER WR2 5AH  
TEL: 01905 428028 FAX: 01905 740650 WEBSITE: www.dlogle.co.uk

*'In Sickness & in Health'*

**WHITTARD**  
OF CHELSEA

CELEBRATING FINE TEA & COFFEE  
SINCE 1886

For the finest tea, the freshest coffee and the best gifts, come and visit us at:  
**Unit C3A, Crowngate Shopping Centre, Chapel Walk, Worcester, WR1 3LD**  
Tel: 01905 729028

**10% OFF**

Bring this guide with you and receive **10% OFF** tea and coffee.

Discount applies to tea and coffee only. Discount cannot be used with any other offer or discount. Discount not valid on Blue Mountain Jamaican coffee. Sale or reduced items or electrical equipment. Valid at Worcester store only.

**Whitehouse**  
HOTEL

The place to dine in Worcester City Centre

**Foregates Brasserie**  
A stylish restaurant with a great choice menu and a fine wine list.  
Open 6.30pm – 9.30pm daily

**The Star Bar**  
Enjoy a relaxing drink or choose from our range of light meals and snacks available throughout the day.  
Open daily from 11am – 11pm

Our Christmas brochure is now available.  
Call the events office for your copy

**Foregate Street, Worcester WR1 1EA**  
Tel: 01905 24308  
enquiries@worcswhitehouse.com  
www.whitehousehotels.com

**Christmas at Worcester City Art Gallery & Museum**

Take a stroll down to Worcester City Art Gallery and Museum this Christmas and you will be amazed at the range of activities, events, arts and crafts on offer. Browse in the shop, which has an extensive range of cards and gifts, or the Craftcase for something extra special. Take a break in the Balcony Café or visit the Worcestershire Soldier Galleries, dedicated to telling the story of the soldiers of the Worcestershire Regiment and the Worcestershire Yeomanry Cavalry.

To coincide with the Worcester Christmas Fayre the Gallery will be hosting a series of events:

22 Oct - 27 Nov Worcester Society of Artists Annual Exhibition.  
25 - 27 Nov Including music, children's workshops and a chance to visit Santa in his Victorian Grotto.  
3 Dec - 4 Feb Barrie Cook - A Painter's Journey.

For full information see the What's on in Worcester on pages 25-29

Admission Free  
Foregate Street WR1 1DT Tel: 01905 25371  
www.worcestercitymuseums.org.uk

**\*FINE INDIAN CUISINE**  
**\*RELAXED ATMOSPHERE**  
**\*BUFFET LUNCH EVERY SUNDAY**  
**\*CELEBRATIONS & PARTIES**

**MONSOON**  
INDIAN RESTAURANT

We offer a wide choice of traditional cuisine plus the chance to discover our Specialty dishes from varied regions of India. We use the freshest ingredients with spices mixed to our own recipe for an authentic flavour of the Indian Sub-continent

www.monsoonindian.co.uk  
**Tel: 01905 726333**  
35 Foregate Street, Worcester WR1 1EE

**Simply Beautiful**  
the spa experience

Non Surgical Facelifts  
Oxygentherapy Facials  
Microdermabrasion  
Lip Enhancements  
Dermalogica Face & Body Treatments  
Creative Nails  
St Tropez Airbrush Tanning  
Aromatic Massage

**Just beneath the surface lies a whole new you**

Experience the most advanced anti ageing, acne, pigmentation and cellulite treatments with Nora Bode's Microdermabrasion and Oxygen therapy using pulsed oxygen, which is shot into the deep layers of the epidermis, giving instant results.

3 St Swithins Street, Worcester WR1 2PY  
Telephone 01905 731178

Receive a **free** Christmas gift voucher worth £40 with every course of Beauty Tox Oxygen therapy

**formative fun**

educational toys, books and games

from birth to 14yrs

christmas catalogues out now!

visit our shop at 5 Charles Street Worcester 01905 22353

*...where learning is child's play!*

**Knowles Sports & Travel Goods**

**10% off**  
any purchase on production of this voucher\*

Tel: 01905 22683 or 01905 22019  
www.knowlesofworcester.co.uk  
19 & 50 Broad Street, Worcester

\* Excluding sale goods. Valid until 24/12/2005

**Cards for Good Causes**

Buy a charity Christmas card this year and support one of 25 national or local charities.

**Shops are open in Worcester from 10am-4pm at**

St. Helen's Church  
High Street  
Tuesday - Saturday  
27th October - 17th December

Old St. Martin's Church  
The Cornmarket  
Monday - Saturday  
27th October - 15th December

**Pasha Indian Cuisine**

*One of Worcestershire's finest Indian Restaurants*

Fully Licensed • Air Conditioned  
Delivery Service available

10% Discount on Takeaways (collection only)

Open Every Day  
12noon-2.00pm. 5.30-midnight (including Bank Holidays)

PARTIES•FUNCTIONS  
BUSINESS LUNCHES  
TRY OUR SUNDAY BUFFET  
MEETINGS CATERED FOR

56 St. John's, Worcester  
Tel. 01905 426327 or 01905 426516

Whilst every effort has been made to ensure the accuracy of the information contained in this magazine, the publishers and promoters shall not be liable for any inaccuracies or omissions. Contributors' opinions are not necessarily shared by the publishers. We gratefully acknowledge the support of all firms whose advertisements appear in these pages. Without their help we should not be able to produce this magazine, but we wish to make clear that the publishers can accept no liability for the products or services advertised. All products are subject to availability. © Worcester City Centre Forum 2005. Tel: 01905 722561. All rights reserved. Reproduction in whole or in part is prohibited without the prior written consent of the publishers. Design by Art Works Design Consultants 01242 572559. Printed by The Westdale Press 029 2066 2600



Martyn Joseph



Clare Teal



Jack and the Beanstalk

#### Thursday 1st December

**VISIT SANTA IN HIS GROTTO**  
Worcester Garden Centre, Droitwich Road – daily throughout December until 12 noon on Saturday 24th December.  
On weekdays in December you can have tea with Santa at the Garden Centre and every weekend in December you can meet Santa for breakfast.

**WORCESTERSHIRE GUILD OF DESIGNER CRAFTSMEN WINTER SHOW**  
St. Helen's Church, High Street, 10am-5.30pm

**SIGN IN FOR MURDER**  
Swan Theatre Studio, 7.30pm  
(For details see Tuesday 29th November).

#### Friday 2nd December

**WORCESTERSHIRE GUILD OF DESIGNER CRAFTSMEN WINTER SHOW**  
St. Helen's Church, High Street, 10am-5.30pm

**SIGN IN FOR MURDER**  
Swan Theatre Studio, 7.30pm  
(For details see Tuesday 29th November).

**SEEGER, WATERSON & CARTHY**  
Huntingdon Hall, 8pm  
Peggy Seeger is Pete's half-sister, her life partner was Salford-born Ewan MacColl, who wrote First Time Ever I Saw Your Face for her and about her. She is perhaps better known for her iconic Feminist song 'Gonna be an Engineer' and the 'Ballad of Springhill'. Martin Carthy is one of the most respected names in British folk, for his interpretation of traditional song, and Norma is renowned for her voice, regarded by many as the finest in England today.

#### Saturday 3rd December

**WORCESTERSHIRE GUILD OF DESIGNER CRAFTSMEN WINTER SHOW**  
St. Helen's Church, High Street, 10am-5.30pm

**CHRISTMAS SALE,**  
Worcester Baptist Church, Sansome Walk, 10am-12noon  
Sale of gifts and crafts for Christmas.

**SIGN IN FOR MURDER**  
Swan Theatre Studio, 2.30pm and 7.30pm  
(For details see Tuesday 29th November).

**MARTYN JOSEPH**  
Huntingdon Hall, 8pm  
Martyn's first studio album since 1999 has industry insiders applauding it as his finest album so far.

#### Sunday 4th December

**WORCESTER FARMERS' MARKET**  
Royal Worcester, Severn Street, 9am-2pm  
The best in local seasonal produce brought to you direct by the growers and makers.

**FLORILEGIUM**  
Huntingdon Hall, 3pm  
Ashley Soloman leads this award-winning quartet comprising of flute, violin, cello or gamba and harpsichord in a programme of music by one of England's greatest composers, Henry Purcell and his contemporaries from the 17th century.

#### Tuesday 6th December

**DYLAN PROJECT**  
Huntingdon Hall, 8pm  
Take four of Britain's most talented folk rock musicians and a unique singer, add the repertoire of a genius, and you've got the recipe for a dream band. The musicians in question are Gerry Conway, Simon Nicol ,Dave Pegg, PJ Wright and the singer is Steve Gibbons. As The Dylan Project, they present an exhilarating tribute to the work of arguably the greatest postwar songwriter in the English language – Bob Dylan.

#### Wednesday 7th December

**JACK & THE BEANSTALK**  
Swan Theatre, 10.30am and 1.30pm  
Join in the Fe-Fi-Fo-Fun with Jack and The Beanstalk as the Swan Theatre presents its third professional pantomime. Find out what happens when Jack swaps his best cow for handful of magical beans!

**ELIZA CARTHY & THE RATCATCHERS**  
Huntingdon Hall, 8pm  
Eliza Carthy, at 29 years old, is only beginning to reach the height of her musical powers after over fifteen years of making traditional music. In this time, she has become one of the most energetic and dynamic musicians of her generation, championing and specialising in English traditional song and dance, whilst collaborating with an array of performers from all over the globe.

#### Thursday 8th December

**JACK & THE BEANSTALK**  
Swan Theatre, 10.30am and 7pm  
(For more information see Wednesday 7th December and article on page 17).

**LADIES' CHRISTMAS LUNCH IN AID OF ST. RICHARD'S HOSPICE**  
Guildhall, High Street, 12.30pm  
Three course Christmas lunch with musical entertainment and a fabulous after-lunch demonstration "Preparing your home for Christmas" by Janet Miller. Request your tickets from Alison Weston before 18th November on 01905 763963 or e-mail appeals@strichards.org.uk

**MIKE SANCHEZ**  
Huntingdon Hall, 8pm  
British singer, pianist and guitarist Mike Sanchez is one of the most exciting and charismatic performers of Rhythm 'n Blues and Rock 'n Roll in the world today. Pumping powerful boogie-woogie from the piano, Mike has won fans from all over the world and has attracted a following from many famous rock and blues legends who have lined up to work with him.

#### Friday 9th December

**JACK & THE BEANSTALK**  
Swan Theatre, 10.30am and 7pm  
(For more information see Wednesday 7th December and article on page 17).

#### Saturday 10th December

**JACK & THE BEANSTALK**  
Swan Theatre, 2pm and 7pm  
(For more information see Wednesday 7th December and article on page 17).

**MALVERN HILLS DISTRICT BRASS BAND**  
Huntingdon Hall, 7.30pm  
A family concert of popular music to suit all tastes, with a seasonal flavour, to put you in the Christmas spirit. Join in the songs, tap your feet, dance if you feel like it. Bring Gran, Grandad, and the kids along for a night of fun at our annual Christmas Concert.

#### Monday 12th December

**JACK & THE BEANSTALK**  
Swan Theatre, 10.30am and 1.30pm  
(For more information see Wednesday 7th December and article on page 17).

#### Tuesday 13th December

**JACK & THE BEANSTALK**  
Swan Theatre, 10.30am and 1.30pm  
(For more information see Wednesday 7th December and article on page 17).

#### Wednesday 14th December

**JACK & THE BEANSTALK**  
Swan Theatre, 10.30am and 1.30pm  
(For more information see Wednesday 7th December and article on page 17).

**CAROLS & CAPERS**  
Huntingdon Hall, 8pm  
A unique celebratory show of Christmas music on medieval and modern instruments. Maddy and the Carnival Band put their inimitable stamp on familiar and not-so-familiar festive fare, from favourites like The Holly and the Ivy and I Saw Three Ships to secular carols, dance tunes, and specially composed songs from their new album.

#### Thursday 15th December

**JACK & THE BEANSTALK**  
Swan Theatre, 10.30am and 1.30pm  
(For more information see Wednesday 7th December and article on page 17).

#### Friday 16th December

**JACK & THE BEANSTALK**  
Swan Theatre, 10.30am and 7pm  
(For more information see Wednesday 7th December and article on page 17).

**CLARE TEAL**  
Huntingdon Hall, 8pm  
Tickets £16.50  
Clare Teal is without doubt the most successful young female jazz singer in the UK today. Last year she signed to Sony Jazz in a deal that has broken records for a UK Jazz singer and she is now poised to become a household name around the World.

#### Saturday 17th December

**CHILDREN'S CHRISTMAS WORKSHOP**  
St. Helen's Church, High Street 10.30am-1pm  
Making puppets and doing other craft activities for Christmas. Puppets will be used to tell the Christmas story at a special service on 24th December. See page 10.

**JACK & THE BEANSTALK**  
Swan Theatre, 2pm and 7pm  
(For more information see Wednesday 7th December and article on page 17).

**ST AGNES FOUNTAIN**  
Huntingdon Hall, 8pm  
Following the success of their last four tours, four of the brightest lights on the acoustic roots/folk scene return once again for an extraordinary evening of traditional, festival delights. Chris While and Julie Matthews join forces with Chris Leslie and David Hughes for a fantastic night acoustic folk not to be missed!

#### Monday 19th December

**JACK & THE BEANSTALK**  
Swan Theatre, 10.30am and 7pm  
(For more information see Wednesday 7th December and article on page 17).

#### Tuesday 20th December

**JACK & THE BEANSTALK**  
Swan Theatre, 10.30am and 7pm  
(For more information see Wednesday 7th December and article on page 17).

#### Wednesday 21st December

**JACK & THE BEANSTALK**  
Swan Theatre, 7pm  
(For more information see Wednesday 7th December and article on page 17).

#### Thursday 22nd December

**ART & CRAFT WORKSHOPS FOR CHILDREN**  
Worcester City Art Gallery & Museum  
Contact the Gallery on 01905 25371 for further details. Workshops run at various times between 22nd December and 3rd January.

**JACK & THE BEANSTALK**  
Swan Theatre, 2pm and 7pm  
(For more information see Wednesday 7th December and article on page 17).

#### Friday 23rd December

**JACK & THE BEANSTALK**  
Swan Theatre, 2pm and 7pm  
(For more information see Wednesday 7th December and article on page 17).

#### Saturday 24th December

**JACK & THE BEANSTALK**  
Swan Theatre, 2pm  
(For more information see Wednesday 7th December and article on page 17).

#### Sunday 25th December

For church and carol services see page 10.

#### Monday 26th December

**JACK & THE BEANSTALK**  
Swan Theatre, 2pm and 7pm  
(For more information see Wednesday 7th December and article on page 17).

#### Tuesday 27th December

**JACK & THE BEANSTALK**  
Swan Theatre, 2pm and 7pm  
(For more information see Wednesday 7th December and article on page 17).

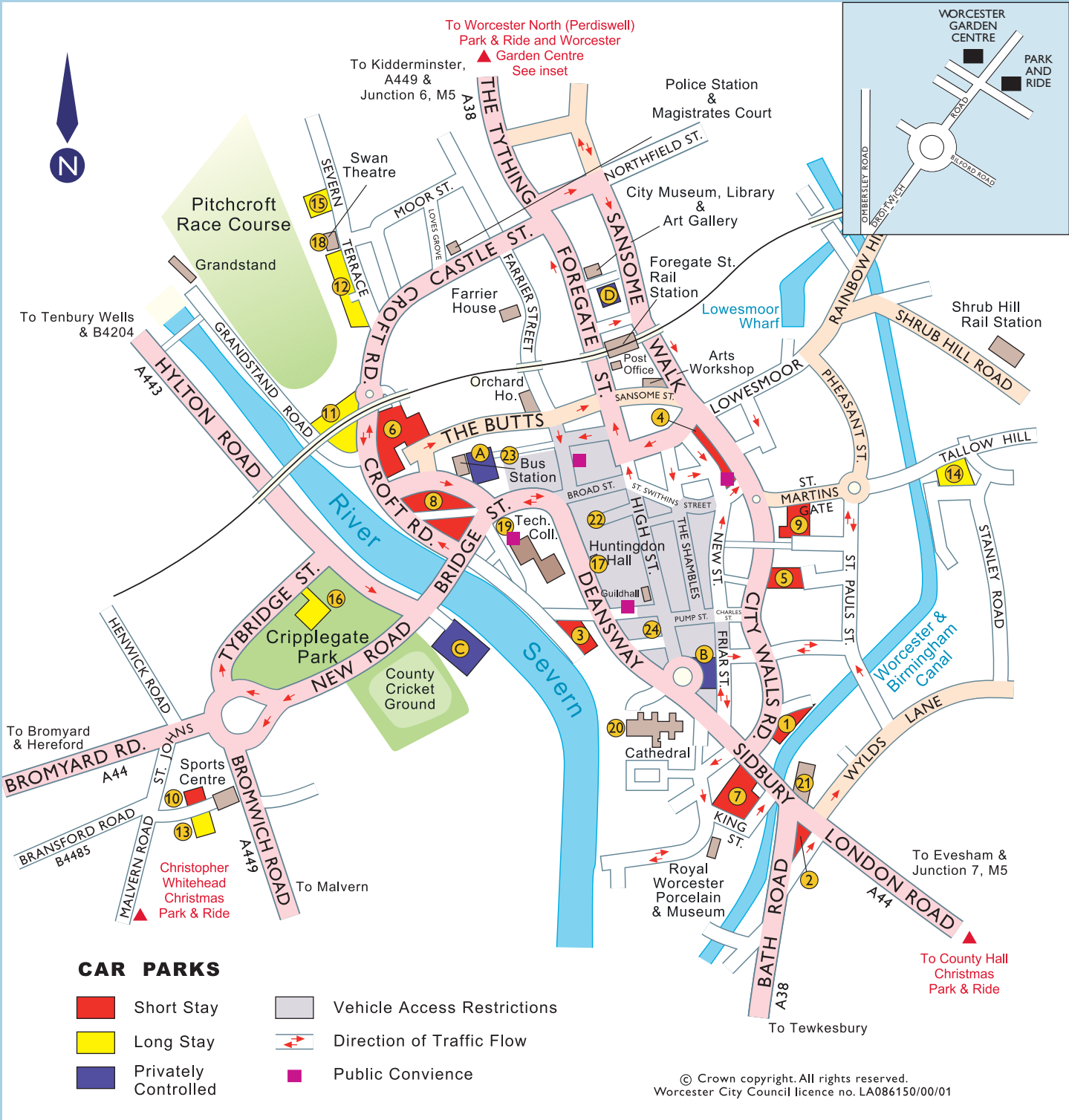
#### Wednesday 28th December

**JACK & THE BEANSTALK**  
Swan Theatre, 2pm and 7pm  
(For more information see Wednesday 7th December and article on page 17).

For church and carol services see p10.



# Where to find us



Car Parks	Venues	Park & Ride
A CrownGate	17 Huntingdon Hall	<b>Worcester North (Perdiswell)</b> (Mon-Sat) 7am - 7pm Late night Thursdays until 10.15pm
B Cathedral Plaza	18 Newport Street	<b>Christopher Whitehead</b> (Saturdays only 26 Nov - 24 Dec) 8.30am - 6.30pm
C New Road	19 St. Martin's Gate	<b>County Hall</b> (Saturdays only 26 Nov - 24 Dec) 8.30am - 6.30pm
D Taylor's Lane	20 St. John's Sports Centre	
1 Clare Street	21 Croft Road	
2 Commandery Road	22 Pitchcroft	
3 Copenhagen Street	23 Swanpool Walk	
4 Cornmarket	24 Tallow Hill	
5 Providence Street	25 The Moors	
6 Cattle Market	26 Tybridge Street	

# Worcester Express

## extra Christmas Park and Ride services

**Perdiswell Park and Ride operates as normal 7.00am to 7.00pm except late night Thursday shopping and during Christmas Fayre**

**W1 - Late nights for the Christmas Fayre**  
from Perdiswell Park and Ride (last bus leaving Crowngate at 10.15pm).  
24th, 25th, 26th November (last dep. 8pm). 27th November (last dep. 6pm)

**W1 - Thursdays late night shopping** from Perdiswell Park and Ride  
(last bus leaving Crowngate at 10.15pm)  
17th, 24th November  
1st, 8th, 15th, 22nd December

**Saturdays from Christopher Whitehead School and County Hall** (from 08.30am).  
Last bus from city centre 6.30pm.  
26th November (Christmas Fayre - last departure 8.00pm)  
3rd, 10th, 17th, 24th December

**Sundays from Perdiswell Park and Ride**  
W1 to the Bus Station (from 09.30am).  
Last bus from Crowngate 6.00pm)  
27th November (Christmas Fayre)  
4th December  
11th December  
18th December

**Prices per person**  
**Parking (including one person's travel) £2.00**  
**Travel only £1.50**



**Enquiries: (01905) 768192 [www.project-express.co.uk](http://www.project-express.co.uk)**

Project Express is a partnership between Worcestershire County Council, Worcester City Council, Worcestershire NHS, First in the Midlands and Worcester Rugby Club