

ENTERTAINMENT PROGRAMME

- E1** Marks & Spencer Bay, New Street
E2 The Guildhall, High Street
E3 Junction of High Street & Pump Street
E4 Pump Street
E5 Friar Street
E6 High Street
 Cornmarket

For entertainment locations please see map overleaf.

Thursday 1st December 2011

Time	Venue	Entertainment
16.00-16.45	E2	Hallow Primary School (Orchestra)
16.30-16.55	E1	Gorse Hill Primary School (Choir/Recorders)
17.00-18.00	E1	Asa Payne (Singer)
17.30-18.00		Opening Ceremony with Carols
17.30-18.30	E4	Kendell Lee (Solo Saxophonist)
18.00-18.30	E1	Northwick Manor Primary School (Choir)
18.15-18.40	E3	Appleyard (Dance)
18.45-19.30	E2	Malvern Hills District Brass Band (Band)
19.00-20.00	E1	Worcester Male Voice Choir (Choir)
19.30-20.00	E3	Fox's Morris (Dance)
19.45-20.45	E5	Kendell Lee (Solo Saxophonist)
20.00-20.25	E3	Appleyard (Dance)
20.00-20.35	E1	Malvern Hills District Brass Band (Band)
20.30-21.00	E2	Fox's Morris (Dance)
16.30-19.30	Roving Entertainment	
Steve Kaos & Mr Doo – Festive Dapper Gents juggling on Stilts		

Friday 2nd December 2011

Time	Venue	Entertainment
11.00-11.30	E1	Oldbury Park Primary School (Choir)
11.00-11.30	E2	Warndon Primary School (Choir & Band)
12.00-12.30	E1	Whittington C of E Primary School (Choir)
12.30-13.30	E2	Wyvern Carol Singers (Choir)
13.15-13.45	E1	Fort Royal Community Primary School (Choir)
13.30-14.00	E2	St Barnabas CE Primary School (Choir)
14.00-14.20	E1	St Clements CE Primary School (Choir)
14.30-15.30	E2	Lady Georgianna (18th Century Girl Band)
14.45-15.15	E1	Perrywood Primary and Nursery School (Choir)
16.00-16.30	E2	Samba Santas (Percussion Band)
16.00-17.30	E5	Lady Georgianna (18th Century Girl Band)
17.00-17.20	E1	Grimley & Holt CE Primary School (Choir)
17.00-17.30	E4	Samba Santas (Percussion Band)
17.00-18.00	E2	Pippa Langhorne & Buddy (Singer)
18.00-19.00	E1	Kendell Lee (Solo Saxophonist)
18.15-18.45	E3	Samba Santas (Percussion Band)
19.00-19.30	E2	Nunnery High School (Choir)
19.15-19.45	E1	Samba Santas (Percussion Band)
19.30-20.30	E5	Kendell Lee (Solo Saxophonist)
19.45-20.15	E1	Colla Voce (Choir)
20.15-20.45	E1	Samba Santas (Percussion Band)
12.30-18.00	Roving Entertainment	
Steve Kaos & Mr Doo – Festive Dapper Gents Juggling on Stilts		
Cyril Mistletoe – Musical Victorian Lamplighter		
Festive Elves – Presented by Creature Encounters		
14.00-20.30	Roving Entertainment	
The Happy Wanderers (Victorian Carol Singers)		

Saturday 3rd December 2011

Time	Venue	Entertainment
10.00-11.00	E1	Worcester Cathedral Voluntary Choir
10.15-10.45	E5	Laki Kranidiotis with Friends (Band)
10.40-11.00	E2	Worcestershire Youth Music: Suzuki Strings
10.45-11.45	E6	Salvation Army (Band)
11.00-11.30	E3	Old Meg Morris Dancers
11.00-11.30	E1	Colla Voce (Choir)
11.00-12.00	E5	Wyvern Carol Singers (Choir)
11.30-12.00	E1	Laki Kranidiotis with Friends (Band)
11.30-12.15	E2	Worcester Concert Brass (Band)
12.00-13.00	E1	Salvation Army (Band)
12.30-13.00	E2	Old Meg Morris Dancers
12.30-13.00	E4	Laki Kranidiotis with Friends (Band)
13.00-14.00	E2	Worcester Cathedral Voluntary Choir
13.00-14.00	E5	Random Numbers (Saxophone Quartet)
13.15-13.45	E1	Worcester Volcano Community Choir
14.00-14.20	E2	Deaf Direct (Sign Language Christmas Carols)
14.00-14.30	E1	Worcester Volcano Community Choir
14.00-14.30	E6	Old Meg Morris Dancers
14.30-15.15	E2	Worcester Concert Brass (Band)
15.00-15.30	E1	The VU Sound (Voices Unlimited) (Choir)
15.30-15.50	E2	Deaf Direct (Sign Language Christmas Carols)
16.00-16.30	E1	The VU Sound (Voices Unlimited) (Choir)
16.30-16.50	E1	Deaf Direct (Sign Language Christmas Carols)
16.30-17.30	E2	Puppet Tree Community Arts: Shadow Puppetry
17.00-18.00	E1	The Whole Caboodle Band
17.45-18.45	E2	Pippa Langhorne & Buddy (Singer)
18.30-19.00	E1	Tor Upson and Martin Addis (Band)
14.00-20.30	Roving Entertainment	
Steve Kaos – Very Tall Festive Juggling Gentleman		
Thomas Trilby – Chirpy Chimney Sweep		
The Dapper Chaps – Fine Festive Fellows & the Chipper Coppers		
Cyril Mistletoe – Musical Victorian Lamplighter		
The Snow Fairy – Presented by Creature Encounters		

Sunday 4th December 2011

Time	Venue	Entertainment
11.00-11.30	E1	Samba Santas (Percussion Band)
11.00-12.00	E2	Lady Georgianna (18th Century Girl Band)
11.30-12.00	E1	Tor Upson and Martin Addis (Band)
12.00-12.30	E2	Samba Santa (Percussion Band)
12.15-13.15	E1	The Whole Caboodle Band
12.30-14.00	E5	Lady Georgianna (18th Century Girl Band)
13.00-13.45	E4	Kendell Lee (Solo Saxophonist)
13.00-14.00	E2	Wyvern Carol Singers (Choir)
13.15-14.00	E1	Pippa Langhorne & Buddy (Singer)
13.45-14.15	E4	Samba Santas (Percussion Band)
14.00-14.45	E2	Allyson Craigan Adults (Band)
14.00-15.00	E1	Single Reeds Saxophone Choir (Band)
14.15-15.00	E5	Kendell Lee (Solo Saxophonist)
14.45-15.15	E3	Samba Santas (Percussion Band)
15.00-16.00	E1	Elgar School of Music Folk Ensemble (Band)
15.15-16.15	E2	Puppet Tree Community Arts: Shadow Puppetry
15.30-16.15	E4	Kendell Lee (Solo Saxophonist)
16.15-17.00	E1	Samba Santas (Percussion Band)
11.00-17.00	Roving Entertainment	
Steve Kaos – Very Tall Festive Juggling Gentleman		
Thomas Trilby – Chirpy Chimney Sweep		
The Dapper Chaps – Fine Festive Fellows & the Chipper Coppers		
Cyril Mistletoe – Musical Victorian Lamplighter		

For further entertainment listings see
www.visitworcester.com/christmasfayre

Worcester Victorian CHRISTMAS FAYRE

The
Midlands'
most prestigious
Victorian themed
Street Fayre



1st–4th
December 2011

Thursday 1st December 4pm-9pm

Friday 2nd December 11am-9pm

Saturday 3rd December 10am-7pm

Sunday 4th December 11am-5pm

WORCESTER CITY CENTRE
www.visitworcester.com/christmasfayre





1st – 4th DECEMBER 2011

Welcome to the 19th Worcester Christmas Fayre

We hope you will have a really enjoyable experience in Worcester this Christmas with lots of new offers to give you a bit of extra festive cheer this year.

What's new
at the Fayre
for 2011

- * Plenty of **new** stalls will complement well-loved established stalls for more quality gift ideas and delicious things to eat and drink. **View the stallholder listings below.**
- * With more than **80 performances** by local schools, choirs, dance troupes, community groups, plus professional Victorian themed entertainers, there will be more entertainment than ever before.
- * Combine your visit to the Fayre with one of the special events organised by city centre attractions and churches and make it a great day out. **See details overleaf.**

STALLHOLDERS AT THE CHRISTMAS FAYRE

Arts, Crafts & Accessories

Becky's Accessories, Cornmarket
Fashion jewellery

Claire Powell Pottery, High Street
Handmade glazed pottery, many with botanical designs

Genie Beads Craft, Mealcheapen Street
Handmade beaded charms & keyrings

Hat's It, New Street
Classic & contemporary hats

Independent Phoenix Trader, Cornmarket
Greetings cards & stationery

Magnolia Jewellery, New Street
Handmade jewellery & pashminas

Passion Accessories/TCB, New Street
Wire art & metal sculptures, knitwear, jewellery & fashion accessories

Red Zebra, Pump Street
Handbags, hats, scarves & bags

Ridgeway Leather, New Street
Sheepskin & leather goods: hats, gloves, wallets, rucksacks, bags, rugs, slippers

Shining Seren, High Street
Sterling silver rings, bangles & earrings

Sundari Ltd, High Street
Gemstone & silver jewellery

Tollhouse Country Crafts, High Street
Spice and wood crafts, candles & Christmas decorations

Westmorland Sheepskins, New Street
Leather & sheepskin gloves, purses, belts, wool caps, chammys, laces, slippers

International Arts & Crafts

Elefair Giftware, High Street
Nepalese & Balinese giftware, jewellery, homeware & accessories

Hell Bent For Leather, High Street
Leather goods from Spain: belts, mirrors, bookmarks, dog collars, chess boards, etc.

Orchid Trading, High Street
Ethnically sourced crafts & accessories

Shobla Trading, High Street
Silver jewellery from India & Poland

Tamrakar Trading, High Street
Winter woollens and jewellery from Nepal

Twin Towns

City of Worcester Twinning Association, Guildhall
Handbags, scarves, cushions & greetings cards

Kleve (Germany), Guildhall
Glühwein, Stollen, marzipan & biscuits

Le Vesinet (France), Guildhall
Cheeses, pâté, mustards, canard, tapenade, preserves, crepes & wine (Thursday–Saturday only)

Ukmergė (Lithuania), Guildhall
Handmade crafts from lace & felt (Thursday–Saturday only)

Festive Gifts, Home & Garden

Birch Hill Dog Rescue, Charles Street
Charity Christmas baubles, gifts & accessories for dogs & cats

Derbyshire Bonsai, High Street
Bonsai trees

Jormae Pourri, Charles Street
Potpourri, wine bottle holders, fruit bamboo baskets, wreaths, oils

Jumping Clay, Cornmarket
Handmade clay products & air-drying modelling clay

Ludicruz, New Street
Handmade oven gloves, ironing board covers, baby hats & scarves, salt & pepper pots

Mick Sheldon, New Street
Traditional family quiz on DVD

Milestone Garden Ornaments, High Street
Handmade garden ornaments

Pollyfields, New Street
Handmade Christmas decorations, scented candles, glass fruit vases

Simply Gifted, Pump Street
Tree decorations, wine & beer glasses, mugs, metal money boxes, etc.

Skinny Dip Skincare Ltd, Mealcheapen Street
Handmade, natural skincare products: creams, lip balms, soaps & bath fizzles

Stephen & Sandra Smith Designs, New Street
Stoneware domestic & decorative pottery

Sweet and Nostalgic, Pump Street
Jigsaws, teatowels, retro sweets, memorabilia, metal signs, etc.

The Slimbridge Soap Company, Pump Street
Soaps, body creams, lip balms, lavender pillows & bath bombs

Treasure Trails, Mealcheapen Street
Treasure hunt booklets

Wise Owl Toys, Charles Street
Jigsaws, puzzles & brainteasers

Local Arts & Crafts

An area in Friar Street and parts of Charles Street, where products are at least 80% handcrafted within 30 miles of Worcester, using local and reclaimed materials and featuring original designs.

B.F.H. Designs, Friar Street
Artwork in wood, candlesticks, boards, games, corkscrews, nut crackers, etc.

Canal Art by Julie, Friar Street
Handpainted canalware and jewellery

Elegance Crafts, Charles Street
Present bags, calendars, door hangers, knitted stockings, tree decorations, etc.

Essential Earth Ltd, Friar Street
Handmade fragranced wax candles & Christmas candles

Faeriestone Jewellery, Friar Street
Tiaras, hair decorations, butterflies, lavender bags, jewellery, purses, etc.

Magical Pigge, Friar Street
Ceramic castles, candle holders, incense burners, feather earrings, etc.

Mia Mia Jewels, Friar Street
Christmas decorations on a wicker base, jewellery, scarves & bags

One of a Kind, Friar Street
Handmade jewellery, pen & ink drawings & cards of animals

Retro Mama, Friar Street
Vintage style gifts: wooden hearts, keyholders, kids' hats, gadget pouches

Ruby Bee, Friar Street
Handmade scented candles using natural ingredients

Vineyard Pottery, Friar Street
Handmade pots, beautiful domestic tableware

Wildwood Coppice Crafts, Friar Street
Locally made decorations from hazel

Local Food & Drink

High quality food and drink from local producers, Heart of England Fine Foods and Worcestershire Farmers' Markets Group members.

Barbourne Cider, Food Court
Worcestershire ciders & perries, hot spicy cider

Callow Hill Country Wines, Food Court
English fruit wines, bottled cider, mulled wine

Caroline's Cakes, New Street
Handmade cupcakes produced in Worcester

Celtic Marches Beverages Ltd, Food Court
Flavoured brandy & apple liqueurs

Emily's Jams and Pickles, Food Court
Homemade jams, chutney, dressings & bespoke hampers

Fudgeheaven, High Street
Handmade fuffie (fudge or truffle?) bars, cakes, swirls & spoons

Mandy & Alan's Fab Food Company, Food Court

Vegetarian desserts, nut roasts, savouries & bakewell puddings

Mr Chill's Traditional Sweet Emporium, New Street

Traditional handmade sweets in jars

Shropshire Spice, Food Court
Traditional stuffing mixes, breadcrumb coatings, spice mixes, gourmet dips

Taylor's Homemade Cakes, Food Court
Assorted brownies, mini iced fruit cakes, shortbread slices, cookie lollipops

Tasty Gifts & Treats

Cotswold Country Liqueurs, Mealcheapen Street
Sloe gin, cherry brandy, citrus spiced whisky, hip flasks for ladies & gents

Direct Beers Ltd, Food Court
Quirky & novel bottled beers in gift packs

Gwatkin Cider Co Ltd, New Street
Real farmhouse cider, perry & mulled cider

Hay Wines, Food Court
Ports, Madeira & Sherry

Hilary's Traditional Roast Chestnuts, Pump Street
Hot roasted chestnuts

Jane Elizabeth Confectionery, New Street & Mealcheapen Street
Traditional fudge and toffee

Marks & Spencer, Pump Street
Celebration lines, chocolates & biscuits

Med Foods Ltd, Food Court
Olives, dried fruit and nuts,

Turkish delight, baklava

Mid Food Ltd, High Street
Nuts, dried fruit, Greek sweets & olives

Pershore Chocolates, Charles Street
Chocolate bark with nuts, fruit, caramel, pretzels

Rockberry-Pedalling Coffee, New Street
Organic & fairtrade coffee, hot chocolate, tea and homemade cakes

Ryan Jepson Cheeses, Food Court
Farmhouse cheeses, Christmas gifts, Yorkshire biscuits & cakes

Spyder Ginger Beer, Cornmarket
Ginger beer, cider ginger beer, mulled ginger beer, real ale packs, etc.

The Chocolate Café UK Ltd, Food Court
Handmade chocolate bars & boxed chocolates

Thomas Irvin, Pump Street
Fudge and liquorice

Worcester Round Table, New Street
Roasted chestnuts

Worcester South Rotary Club, Charles Street
Mulled wine and mince pies

ALL ABOUT WORCESTER & THE FAYRE

For further up-to-date event information, special offers and to find out more about Worcester, please explore www.visitworcester.com or visit **The Worcester Shop** at the Guildhall, High Street, for visitor information and local gifts.



Food & Drink on the Go

Ashfield Hog Roast, High Street
Burgers & hot pork rolls

Boreley Pig Roast, Food Court
Traditional pig roast

Coffee Bar, Pump Street
Hot chocolate with brandy or Baileys

Coffee Kings, New Street
Variety of coffees & hot chocolates

Cotswold Crepes, High Street
Crepes and hot drinks

Crepes & Donuts, Food Court
Sugar donuts & cinnamon donuts, sweet and savoury crepes

Express Catering, High Street
Grilled Bratwurst, Krakauer, Currywurst & cheesy sausages

Greedy Pig Catering, New Street
Sliced potatoes, garlic mushrooms & German burgers

Green Park Brasserie Ltd, Food Court
Worcestershire sausages & mulled cider, Bratwurst sausages & German Glühwein

Poffertjes, Pump Street
Mini Dutch pancakes with toppings

R&B Soul Food Caribbean Kitchen, Food Court

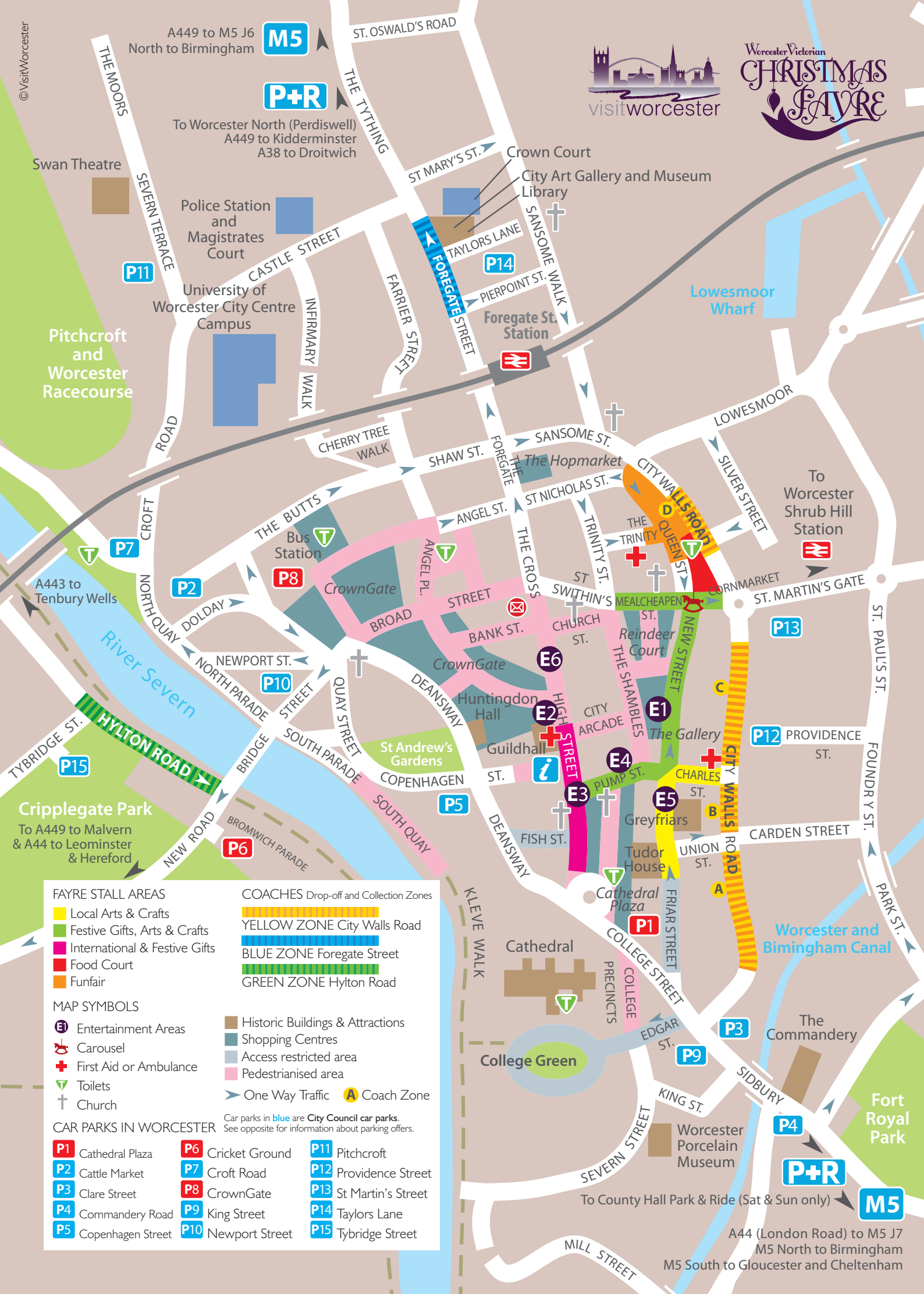
Caribbean food: vegetarian stew, jerk chicken, pork, curry

Superior Fast Foods, Cornmarket
Beef burgers and baguettes, sausages, corn on the cob, curry & chips

The White Lion – Hop & Stagger, High Street

Traditional hot mulled cider & winter porter-mulled wine

For further up-to-date stall listings and new stall additions, please explore www.visitworcester.com/christmasfayre



FAYRE STALL AREAS

- Local Arts & Crafts
- Festive Gifts, Arts & Crafts
- International & Festive Gifts
- Food Court
- Funfair

MAP SYMBOLS

- Entertainment Areas
- Carousel
- First Aid or Ambulance
- Toilets
- Church

COACHES Drop-off and Collection Zones

- YELLOW ZONE** City Walls Road
- BLUE ZONE** Foregate Street
- GREEN ZONE** Hylton Road

- Historic Buildings & Attractions
- Shopping Centres
- Access restricted area
- Pedestrianised area

- One Way Traffic
- Coach Zone

CAR PARKS IN WORCESTER

- | | | |
|--|--|--|
| P1 Cathedral Plaza | P6 Cricket Ground | P11 Pitchcroft |
| P2 Cattle Market | P7 Croft Road | P12 Providence Street |
| P3 Clare Street | P8 CrownGate | P13 St Martin's Street |
| P4 Commandery Road | P9 King Street | P14 Taylors Lane |
| P5 Copenhagen Street | P10 Newport Street | P15 Tybridge Street |

Car parks in blue are City Council car parks.
See opposite for information about parking offers.

A44 (London Road) to M5 J7
M5 North to Birmingham
M5 South to Gloucester and Cheltenham

SPECIAL FAYRE EVENTS IN THE CITY CENTRE

Huntingdon Hall, CrownGate Shopping Centre
3rd December, 19.30-22.00
Malvern Hills District Brass Band (£)

Old St Martin's, The Cornmarket
1st-4th December, 09.30-15.30
Cards for Good Causes

St Helen's Church, Fish Street
4th December, 10.00-16.00
Open Day & Refreshments

St Swithun's Church, Church Street
3rd December, 12.30-15.30
Various Festive Concerts
3rd December, 17.30
Voices Unlimited Contemporary Choir

The Commandery, Sidbury
3rd December, 10.00-17.00 &
4th December, 13.00-17.00
Christmas Craft Workshops
for Children (£)

The Greyfriars (NT), Friar Street
1st & 2nd December, 18.00-21.00
Candle-Lit Christmas (£)
2nd December, 11.30-12.30
Lifting the Lid on the Greyfriars (Tour; £)

The Guildhall, High Street
1st-4th December, 09.30-16.30
Cards for Good Causes
3rd December, 16.30-20.00
A Festival of Christmas Music presented
by The Elgar School of Music (£)

Tudor House, Friar Street
1st-4th December
(Fayre opening times)
Father Christmas & Historic Stocks

Worcester Cathedral
1st December, 19.30-21.30
Christmas Concert (£)

1st-4th December, 09.00-17.00
Poverty Over – Exhibition from
Christian Aid
2nd-4th December
Christmas Fayre in the Cloisters
(see detailed listing in advert)

Worcester City Art Gallery & Museum
1st-3rd December, 10.30-16.30
Edwardian Elegance (Exhibition)
3rd December, 10.30-16.30
Crafted for You (Exhibition)
3rd December, 11.00-16.00
Something Extra Special Crafted
for You! (Workshop; 5 years +; £)

Worcester Porcelain Museum
2nd & 3rd December, 10.30-16.00
Free Entry Days
Meet and Watch Master Gilder at Work
Mimicking the Orient Exhibition
£ = admission fee / ticketed event

For further up-to-date event information, special offers and to find out more about Worcester, please explore
www.visitworcester.com

CHRISTMAS FAYRE IN THE CLOISTERS

Tel: 01905 732900
www.worcestercathedral.co.uk
Fri 2 & Sat 3 Dec 10am-4pm
and Sun 4 Dec, 12.30pm-3.30pm



- Quality Gift and Craft Stalls
- Mulled wine, mince pies and refreshments
- Rest your weary shopping feet and listen to seasonal music
- Young Enterprise stalls offering innovative creations on Saturday in College Hall



FREE PARKING FOR CHRISTMAS SHOPPING

If you've enjoyed your visit to the Fayre, why not come back and finish your Christmas shopping in Worcester? For late night Thursday shopping through December there will be **FREE PARKING** in all City Council car parks after 6pm and shops are open till 9pm. On Sundays in December buy the first 2 hours and get the rest of the day free in all City Council car parks. Parking offers are not valid at Cornmarket car park during the Fayre.



DATES FOR NEXT YEAR
20th Worcester Victorian Christmas Fayre
Thu 29th November – Sun 2nd December 2012

Worcester Christmas Fayre Park & Ride

Thursday 1st December –
Sunday 4th December 2011



Perdiswell Park & Ride

Thursday	07.00 – 21.10 Every 15 minutes until 19.10, then every 30 minutes
Friday	07.00 – 21.10 Every 15 minutes until 19.10, then every 30 minutes
Saturday	07.00 – 19.10 Every 10 minutes
Sunday	10.15 – 17.00 Every 20 minutes

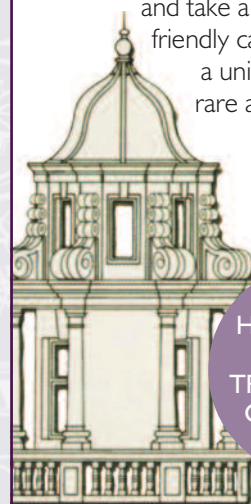
County Hall Using First 910 service to Cathedral Island

Saturday	08.30 – 20.15 Every 10 minutes
Sunday	10.30 – 17.00 Every 20 minutes

Standard fares apply

Entrances from The Foregate and St. Nicholas Street

Come and visit Worcester's historic Hopmarket yard and take a break in our friendly café. We offer a unique blend of rare and exclusive shops with a variety of Christmas gift ideas.



**THE HOPMARKET
YARD FOR
TRADITIONAL
CHRISTMAS
GIFTS**

THE HOPMARKET

MASON'S OLIVE & BEAN

**WE OFFER A WARM
WELCOME AND GREAT
FOOD.**



MASON'S OLIVE AND BEAN CAFE AND DELICATESSEN OFFERS
FRESH HOME MADE FOOD USING LOCAL SUPPLIERS.

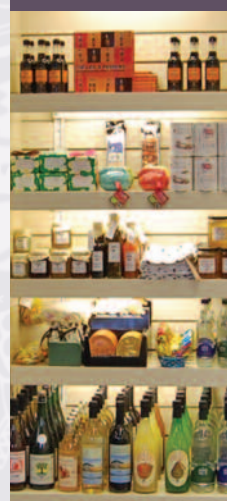


4-6 PUMP STREET, WORCESTER, WR1 2QT

TEL: 01905 330101

Whilst every effort has been made to ensure the accuracy of information contained in this publication, the publishers and promoters shall not be liable for any errors, omissions, location/product/time changes or cancellations.
©VisitWorcester 2011. The Worcester Victorian Christmas Fayre is organised by VisitWorcester.

THE WORCESTER SHOP



visitor information
accommodation
travel bookings
day trips
guided walks
books, maps & guides
local gifts & crafts
cards & stamps

The Worcester Shop
at the Guildhall,
High Street
01905 726311
visitworcester.com



Open throughout the Christmas Fayre
(see front of leaflet for hours)
and normal opening hours
Monday-Saturday 09.30-17.00

